

Anti-ABHD12 antibody (200-280 Internal) (STJ91420)

STJ91420

GENERAL INFORMATION

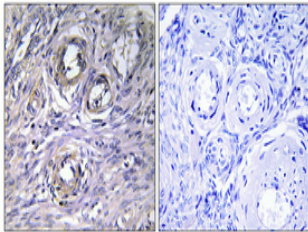
Product Type	Primary antibodies
Short Description	Rabbit polyclonal antibody anti-Lysophosphatidylserine Lipase Abhd12 (200-280 Internal) is suitable for use in Western Blot, Immunohistochemistry, Immunofluorescence and ELISA research applications.
Applications	WB, IHC-P, IF-P, ELISA
Host/Source	Rabbit
Reactivity	Human, Mouse, Rat

PRODUCT PROPERTIES

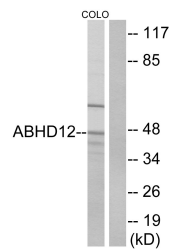
Clonality	Polyclonal
Clone ID	
Concentration	1 mg/mL
Conjugation	Unconjugated
Purification	The antibody was affinity-purified from rabbit anti-serum by affinity-chromatography.
Dilution Range	WB 1:500-1:2000 IHC 1:100-1:300 ELISA 1:40000
Formulation	PBS, 50% Glycerol, 0.5% BSA and 0.02% Sodium Azide.
Isotype	IgG
Storage Instruction	Store at -20°C for up to 1 year from the date of receipt, and avoid repeat freeze-thaw cycles.

TARGET INFORMATION

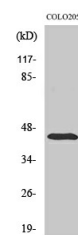
Gene ID	26090
Gene Symbol	ABHD12
Uniprot ID	ABD12_HUMAN
Immunogen	The antiserum was produced against synthesized peptide derived from human ABHD12 at amino acid range 231-280
Immunogen Region	200-280 Internal
Specificity	ABHD12 polyclonal antibody (Lysophosphatidylserine Lipase Abhd12) binds to endogenous Lysophosphatidylserine Lipase Abhd12 at the amino acid region 200-280 Internal.
Immunogen Sequence	



Immunohistochemical analysis of paraffin-embedded Human ovary. Antibody was diluted at 1:100 (4°C overnight). High-pressure and temperature Tris-EDTA, pH8.0 was used for antigen retrieval. Negative control (right) obtained from antibody was pre-absorbed by immunogen peptide.



Western blot analysis of lysates from COLO cells, using ABHD12 Antibody. The lane on the right is blocked with the synthesized peptide.



Western blot analysis of various cells using ABHD12 Polyclonal Antibody

This product is suitable for in-vitro studies under the RESEARCH USE ONLY [RUO] licence. This product must not be used as for diagnostic or other medical purposes.
St John's Laboratory Ltd, Knowledge Dock Business Centre, University Way, London, E16 2RD | Tel: 0208 223 3081