

Anti-ABCF2 antibody (140-220 Internal) (STJ91417)

STJ91417

GENERAL INFORMATION

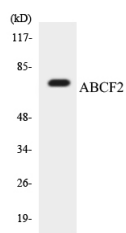
Product Type	Primary antibodies
Short Description	Rabbit polyclonal antibody anti-Atp-Binding Cassette Sub-Family F Member 2 (140-220 Internal) is suitable for use in Western Blot and ELISA research applications.
Applications	WB, ELISA
Host/Source	Rabbit
Reactivity	Human, Mouse, Rat

PRODUCT PROPERTIES

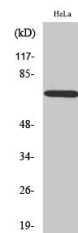
Clonality	Polyclonal
Clone ID	
Concentration	1 mg/mL
Conjugation	Unconjugated
Purification	The antibody was affinity-purified from rabbit anti-serum by affinity-chromatography.
Dilution Range	WB 1:500-1:2000 ELISA 1:5000
Formulation	PBS, 50% Glycerol, 0.5% BSA and 0.02% Sodium Azide.
Isotype	IgG
Storage Instruction	Store at -20°C for up to 1 year from the date of receipt, and avoid repeat freeze-thaw cycles.

TARGET INFORMATION

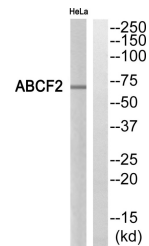
Gene ID	10061/114483834
Gene Symbol	ABCF2
Uniprot ID	ABCF2_HUMAN
Immunogen	The antiserum was produced against synthesized peptide derived from human ABCF2 at amino acid range 171-220
Immunogen Region	140-220 Internal
Specificity	ABCF2 polyclonal antibody (Atp-Binding Cassette Sub-Family F Member 2) binds to endogenous Atp-Binding Cassette Sub-Family F Member 2 at the amino acid region 140-220 Internal.
Immunogen Sequence	



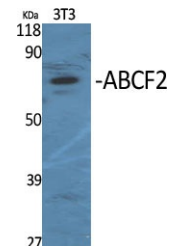
Western blot analysis of the lysates from HepG2 cells using ABCF2 antibody.



Western blot analysis of HeLa cells using ABCF2 Polyclonal Antibody



Western blot analysis of ABCF2 Antibody. The lane on the right is blocked with the ABCF2 peptide.



Western blot analysis of various cells using ABCF2 Polyclonal Antibody

This product is suitable for in-vitro studies under the RESEARCH USE ONLY [RUO] licence. This product must not be used as for diagnostic or other medical purposes.
St John's Laboratory Ltd, Knowledge Dock Business Centre, University Way, London, E16 2RD | Tel: 0208 223 3081