

Anti-ABCF1 antibody (760-840 C-Term) (STJ91416)

STJ91416

GENERAL INFORMATION

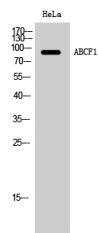
Product Type	Primary antibodies
Short Description	Rabbit polyclonal antibody anti-Atp-Binding Cassette Sub-Family F Member 1 (760-840 C-Term) is suitable for use in Western Blot and ELISA research applications.
Applications	WB, ELISA
Host/Source	Rabbit
Reactivity	Human, Mouse, Rat

PRODUCT PROPERTIES

Clonality	Polyclonal
Clone ID	
Concentration	1 mg/mL
Conjugation	Unconjugated
Purification	The antibody was affinity-purified from rabbit anti-serum by affinity-chromatography.
Dilution Range	WB 1:500-1:2000 ELISA 1:10000
Formulation	PBS, 50% Glycerol, 0.5% BSA and 0.02% Sodium Azide.
Isotype	IgG
Storage Instruction	Store at -20°C for up to 1 year from the date of receipt, and avoid repeat freeze-thaw cycles.

TARGET INFORMATION

Gene ID	23
Gene Symbol	ABCF1
Uniprot ID	ABCF1_HUMAN
Immunogen	Synthesized peptide derived from ABCF1. at amino acid range: 760-840
Immunogen Region	760-840 C-Term
Specificity	ABCF1 polyclonal antibody (Atp-Binding Cassette Sub-Family F Member 1) binds to endogenous Atp-Binding Cassette Sub-Family F Member 1 at the amino acid region 760-840 C-Term.
Immunogen Sequence	



Western blot analysis of HeLa cells using ABCF1 Polyclonal Antibody

This product is suitable for in-vitro studies under the RESEARCH USE ONLY [RUO] licence. This product must not be used as for diagnostic or other medical purposes.
 St John's Laboratory Ltd, Knowledge Dock Business Centre, University Way, London, E16 2RD | Tel: 0208 223 3081