

## Anti-ABCD1 antibody (500-580 Internal) (STJ91414)

STJ91414

### GENERAL INFORMATION

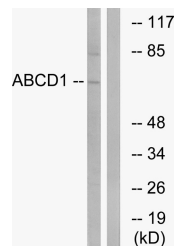
<b>Product Type</b>	Primary antibodies
<b>Short Description</b>	Rabbit polyclonal antibody anti-Atp-Binding Cassette Sub-Family D Member 1 (500-580 Internal) is suitable for use in Western Blot and ELISA research applications.
<b>Applications</b>	WB, ELISA
<b>Host/Source</b>	Rabbit
<b>Reactivity</b>	Human, Rat, Mouse

### PRODUCT PROPERTIES

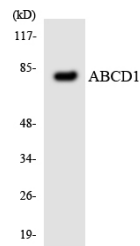
<b>Clonality</b>	Polyclonal
<b>Clone ID</b>	
<b>Concentration</b>	1 mg/mL
<b>Conjugation</b>	Unconjugated
<b>Purification</b>	The antibody was affinity-purified from rabbit anti-serum by affinity-chromatography.
<b>Dilution Range</b>	WB 1:500-1:2000 ELISA 1:40000
<b>Formulation</b>	PBS, 50% Glycerol, 0.5% BSA and 0.02% Sodium Azide.
<b>Isotype</b>	IgG
<b>Storage Instruction</b>	Store at -20°C for up to 1 year from the date of receipt, and avoid repeat freeze-thaw cycles.

### TARGET INFORMATION

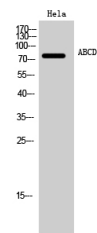
<b>Gene ID</b>	215
<b>Gene Symbol</b>	ABCD1
<b>Uniprot ID</b>	ABCD1_HUMAN
<b>Immunogen</b>	The antiserum was produced against synthesized peptide derived from human ABCD1 at amino acid range 531-580
<b>Immunogen Region</b>	500-580 Internal
<b>Specificity</b>	ABCD1 polyclonal antibody (Atp-Binding Cassette Sub-Family D Member 1) binds to endogenous Atp-Binding Cassette Sub-Family D Member 1 at the amino acid region 500-580 Internal.
<b>Immunogen Sequence</b>	



Western blot analysis of lysates from Jurkat cells, using ABCD1 Antibody. The lane on the right is blocked with the synthesized peptide.



Western blot analysis of the lysates from HeLa cells using ABCD1 antibody.



Western blot analysis of HeLa cells using ABCD1 Polyclonal Antibody