

Anti-ABCA8 antibody (1120-1200 Internal) (STJ91409)

STJ91409

GENERAL INFORMATION

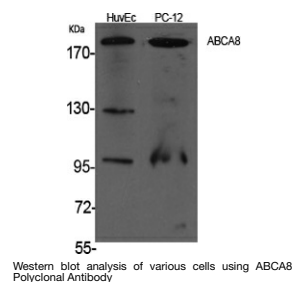
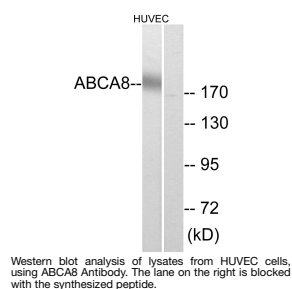
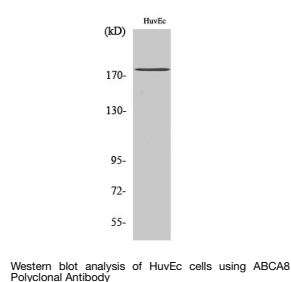
Product Type	Primary antibodies
Short Description	Rabbit polyclonal antibody anti-Abc-Type Organic Anion Transporter Abca8 (1120-1200 Internal) is suitable for use in Western Blot and ELISA research applications.
Applications	WB, ELISA
Host/Source	Rabbit
Reactivity	Human, Mouse

PRODUCT PROPERTIES

Clonality	Polyclonal
Clone ID	
Concentration	1 mg/mL
Conjugation	Unconjugated
Purification	The antibody was affinity-purified from rabbit anti-serum by affinity-chromatography.
Dilution Range	WB 1:500-1:2000 ELISA 1:40000
Formulation	PBS, 50% Glycerol, 0.5% BSA and 0.02% Sodium Azide.
Isotype	IgG
Storage	Store at -20°C for up to 1 year from the date of receipt, and avoid repeat freeze-thaw cycles.
Instruction	

TARGET INFORMATION

Gene ID	10351
Gene Symbol	ABCA8
Uniprot ID	ABCA8_HUMAN
Immunogen	The antiserum was produced against synthesized peptide derived from human ABCA8 at amino acid range 1151-1200
Immunogen Region	1120-1200 Internal
Specificity	ABCA8 polyclonal antibody (Abc-Type Organic Anion Transporter Abca8) binds to endogenous Abc-Type Organic Anion Transporter Abca8 at the amino acid region 1120-1200 Internal.
Immunogen Sequence	



This product is suitable for in-vitro studies under the RESEARCH USE ONLY [RUO] licence. This product must not be used as for diagnostic or other medical purposes.
St John's Laboratory Ltd, Knowledge Dock Business Centre, University Way, London, E16 2RD | Tel: 0208 223 3081