

Anti-ABCA6 antibody (1180-1260 C-Term) (STJ91408)

STJ91408

GENERAL INFORMATION

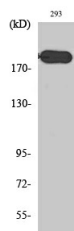
Product Type	Primary antibodies
Short Description	Rabbit polyclonal antibody anti-Atp-Binding Cassette Sub-Family A Member 6 (1180-1260 C-Term) is suitable for use in Western Blot and ELISA research applications.
Applications	WB, ELISA
Host/Source	Rabbit
Reactivity	Human, Rat, Mouse

PRODUCT PROPERTIES

Clonality	Polyclonal
Clone ID	
Concentration	1 mg/mL
Conjugation	Unconjugated
Purification	The antibody was affinity-purified from rabbit anti-serum by affinity-chromatography.
Dilution Range	WB 1:500-1:2000 ELISA 1:40000
Formulation	PBS, 50% Glycerol, 0.5% BSA and 0.02% Sodium Azide.
Isotype	IgG
Storage Instruction	Store at -20°C for up to 1 year from the date of receipt, and avoid repeat freeze-thaw cycles.

TARGET INFORMATION

Gene ID	23460
Gene Symbol	ABCA6
Uniprot ID	ABCA6_HUMAN
Immunogen	Synthesized peptide derived from ABCA6. at amino acid range: 1180-1260
Immunogen Region	1180-1260 C-Term
Specificity	ABCA6 polyclonal antibody (Atp-Binding Cassette Sub-Family A Member 6) binds to endogenous Atp-Binding Cassette Sub-Family A Member 6 at the amino acid region 1180-1260 C-Term.
Immunogen Sequence	



Western blot analysis of various cells using ABCA6 Polyclonal Antibody

This product is suitable for in-vitro studies under the RESEARCH USE ONLY [RUO] licence. This product must not be used as for diagnostic or other medical purposes.
St John's Laboratory Ltd, Knowledge Dock Business Centre, University Way, London, E16 2RD | Tel: 0208 223 3081