

## Anti-ABCA13 antibody (2220-2300 Internal) (STJ91407)

STJ91407

### GENERAL INFORMATION

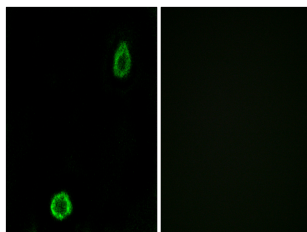
<b>Product Type</b>	Primary antibodies
<b>Short Description</b>	Rabbit polyclonal antibody anti-Atp-Binding Cassette Sub-Family A Member 13 (2220-2300 Internal) is suitable for use in Immunofluorescence, Immunocytochemistry and ELISA research applications.
<b>Applications</b>	IF, ICC, ELISA
<b>Host/Source</b>	Rabbit
<b>Reactivity</b>	Human, Rat, Mouse

### PRODUCT PROPERTIES

<b>Clonality</b>	Polyclonal
<b>Clone ID</b>	
<b>Concentration</b>	1 mg/mL
<b>Conjugation</b>	Unconjugated
<b>Purification</b>	The antibody was affinity-purified from rabbit anti-serum by affinity-chromatography.
<b>Dilution</b>	IF 1:200-1:1000
<b>Range</b>	ELISA 1:40000
<b>Formulation</b>	PBS, 50% Glycerol, 0.5% BSA and 0.02% Sodium Azide.
<b>Isotype</b>	IgG
<b>Storage</b>	Store at -20°C for up to 1 year from the date of receipt, and avoid repeat freeze-thaw cycles.
<b>Instruction</b>	

### TARGET INFORMATION

<b>Gene ID</b>	154664
<b>Gene Symbol</b>	ABCA13
<b>Uniprot ID</b>	ABCAD_HUMAN
<b>Immunogen</b>	The antiserum was produced against synthesized peptide derived from human ABCA13 at amino acid range 2251-2300
<b>Immunogen Region</b>	2220-2300 Internal
<b>Specificity</b>	ABCA13 polyclonal antibody (Atp-Binding Cassette Sub-Family A Member 13) binds to endogenous Atp-Binding Cassette Sub-Family A Member 13 at the amino acid region 2220-2300 Internal.
<b>Immunogen Sequence</b>	



Immunofluorescence analysis of A549 cells, using ABCA13 Antibody. The picture on the right is blocked with the synthesized peptide.

This product is suitable for in-vitro studies under the RESEARCH USE ONLY [RUO] licence. This product must not be used as for diagnostic or other medical purposes.  
St John's Laboratory Ltd, Knowledge Dock Business Centre, University Way, London, E16 2RD | Tel: 0208 223 3081