

Anti-AAK1 antibody (240-320 Internal) (STJ91403)

STJ91403

GENERAL INFORMATION

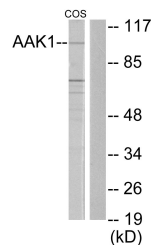
Product Type	Primary antibodies
Short Description	Rabbit polyclonal antibody anti-Ap2-Associated Protein Kinase 1 (240-320 Internal) is suitable for use in Western Blot, Immunohistochemistry, Immunofluorescence, Immunocytochemistry and ELISA research applications.
Applications	WB, IHC-P, IF, ICC, ELISA
Host/Source	Rabbit
Reactivity	Human, Mouse, Rat, Monkey

PRODUCT PROPERTIES

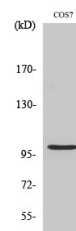
Clonality	Polyclonal
Clone ID	
Concentration	1 mg/mL
Conjugation	Unconjugated
Purification	The antibody was affinity-purified from rabbit anti-serum by affinity-chromatography.
Dilution Range	WB 1:500-1:2000 IHC 1:100-1:300 IF 1:200-1:1000 ELISA 1:20000
Formulation	PBS, 50% Glycerol, 0.5% BSA and 0.02% Sodium Azide.
Isotype	IgG
Storage Instruction	Store at -20°C for up to 1 year from the date of receipt, and avoid repeat freeze-thaw cycles.

TARGET INFORMATION

Gene ID	22848
Gene Symbol	AAK1
Uniprot ID	AAK1_HUMAN
Immunogen	The antiserum was produced against synthesized peptide derived from human AAK1 at amino acid range 271-320
Immunogen Region	240-320 Internal
Specificity	AAK1 polyclonal antibody (Ap2-Associated Protein Kinase 1) binds to endogenous Ap2-Associated Protein Kinase 1 at the amino acid region 240-320 Internal.
Immunogen Sequence	



Western blot analysis of lysates from COS7 cells, using AAK1 Antibody. The lane on the right is blocked with the synthesized peptide.



Western blot analysis of various cells using AAK1 Polyclonal Antibody

This product is suitable for in-vitro studies under the RESEARCH USE ONLY [RUO] licence. This product must not be used as for diagnostic or other medical purposes.
St John's Laboratory Ltd, Knowledge Dock Business Centre, University Way, London, E16 2RD | Tel: 0208 223 3081