

Anti-UBQLN4 antibody (180-260 Internal) (STJ91401)

STJ91401

GENERAL INFORMATION

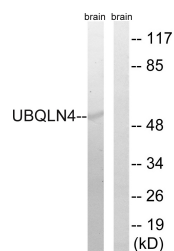
Product Type	Primary antibodies
Short Description	Rabbit polyclonal antibody anti-Ubiqulin-4 (180-260 Internal) is suitable for use in Western Blot, Immunohistochemistry, Immunofluorescence and ELISA research applications.
Applications	WB, IHC-P, IF-P, ELISA
Host/Source	Rabbit
Reactivity	Human, Mouse

PRODUCT PROPERTIES

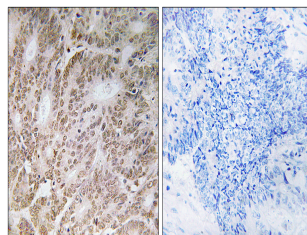
Clonality	Polyclonal
Clone ID	
Concentration	1 mg/mL
Conjugation	Unconjugated
Purification	The antibody was affinity-purified from rabbit anti-serum by affinity-chromatography.
Dilution Range	WB 1:500-1:2000 IHC 1:100-1:300 ELISA 1:40000
Formulation	PBS, 50% Glycerol, 0.5% BSA and 0.02% Sodium Azide.
Isotype	IgG
Storage Instruction	Store at -20°C for up to 1 year from the date of receipt, and avoid repeat freeze-thaw cycles.

TARGET INFORMATION

Gene ID	56893
Gene Symbol	UBQLN4
Uniprot ID	UBQL4_HUMAN
Immunogen	The antiserum was produced against synthesized peptide derived from human UBQLN4 at amino acid range 201-250
Immunogen Region	180-260 Internal
Specificity	UBQLN4 polyclonal antibody (Ubiqulin-4) binds to endogenous Ubiqulin-4 at the amino acid region 180-260 Internal.
Immunogen Sequence	



Western blot analysis of lysates from mouse brain, using UBQLN4 Antibody. The lane on the right is blocked with the synthesized peptide.



Immunohistochemistry analysis of paraffin-embedded human colon carcinoma tissue, using UBQLN4 Antibody. The picture on the right is blocked with the synthesized peptide.