

Anti-ADCY8 antibody (560-640 Internal) (STJ91400)

STJ91400

GENERAL INFORMATION

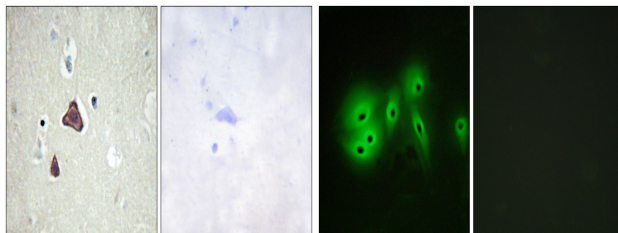
Product Type	Primary antibodies
Short Description	Rabbit polyclonal antibody anti-Adenylate Cyclase Type 8 (560-640 Internal) is suitable for use in Immunohistochemistry, Immunofluorescence, Immunocytochemistry and ELISA research applications.
Applications	IHC-P, IF, ICC, ELISA
Host/Source	Rabbit
Reactivity	Human, Mouse, Rat

PRODUCT PROPERTIES

Clonality	Polyclonal
Clone ID	
Concentration	1 mg/mL
Conjugation	Unconjugated
Purification	The antibody was affinity-purified from rabbit anti-serum by affinity-chromatography.
Dilution	IHC 1:100-1:300
Range	IF 1:200-1:1000 ELISA 1:40000
Formulation	PBS, 50% Glycerol, 0.5% BSA and 0.02% Sodium Azide.
Isotype	IgG
Storage Instruction	Store at -20°C for up to 1 year from the date of receipt, and avoid repeat freeze-thaw cycles.

TARGET INFORMATION

Gene ID	114
Gene Symbol	ADCY8
Uniprot ID	ADCY8_HUMAN
Immunogen	The antiserum was produced against synthesized peptide derived from human ADCY8 at amino acid range 591-640
Immunogen Region	560-640 Internal
Specificity	ADCY8 polyclonal antibody (Adenylate Cyclase Type 8) binds to endogenous Adenylate Cyclase Type 8 at the amino acid region 560-640 Internal.
Immunogen Sequence	



Immunohistochemistry analysis of paraffin-embedded human brain tissue, using ADCY8 Antibody. The picture on the right is blocked with the synthesized peptide.

Immunofluorescence analysis of A549 cells, using ADCY8 Antibody. The picture on the right is blocked with the synthesized peptide.