

Anti-ADCY7 antibody (160-240 Internal) (STJ91399)

STJ91399

GENERAL INFORMATION

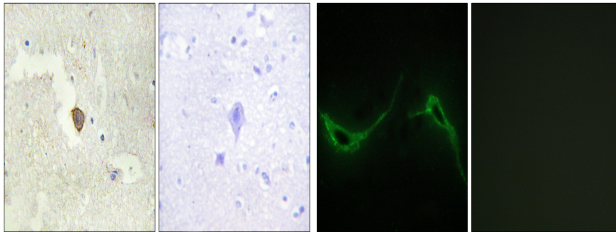
Product Type	Primary antibodies
Short Description	Rabbit polyclonal antibody anti-Adenylate Cyclase Type 7 (160-240 Internal) is suitable for use in Immunohistochemistry, Immunofluorescence, Immunocytochemistry and ELISA research applications.
Applications	IHC-P, IF, ICC, ELISA
Host/Source	Rabbit
Reactivity	Human, Mouse

PRODUCT PROPERTIES

Clonality	Polyclonal
Clone ID	
Concentration	1 mg/mL
Conjugation	Unconjugated
Purification	The antibody was affinity-purified from rabbit anti-serum by affinity-chromatography.
Dilution Range	IHC 1:100-1:300 IF 1:200-1:1000 ELISA 1:5000
Formulation	PBS, 50% Glycerol, 0.5% BSA and 0.02% Sodium Azide.
Isotype	IgG
Storage Instruction	Store at -20°C for up to 1 year from the date of receipt, and avoid repeat freeze-thaw cycles.

TARGET INFORMATION

Gene ID	113
Gene Symbol	ADCY7
Uniprot ID	ADCY7_HUMAN
Immunogen	The antiserum was produced against synthesized peptide derived from human ADCY7 at amino acid range 191-240
Immunogen Region	160-240 Internal
Specificity	ADCY7 polyclonal antibody (Adenylate Cyclase Type 7) binds to endogenous Adenylate Cyclase Type 7 at the amino acid region 160-240 Internal.
Immunogen Sequence	



Immunohistochemistry analysis of paraffin-embedded human brain tissue, using ADCY7 Antibody. The picture on the right is blocked with the synthesized peptide.

Immunofluorescence analysis of NIH/3T3 cells, using ADCY7 Antibody. The picture on the right is blocked with the synthesized peptide.

This product is suitable for in-vitro studies under the RESEARCH USE ONLY [RUO] licence. This product must not be used as for diagnostic or other medical purposes.
St John's Laboratory Ltd, Knowledge Dock Business Centre, University Way, London, E16 2RD | Tel: 0208 223 3081