

Anti-EIF4EBP1 antibody (10-90) (STJ91388)

STJ91388

GENERAL INFORMATION

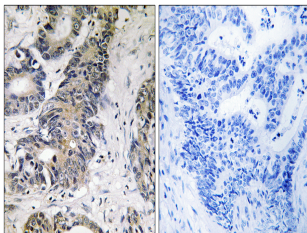
Product Type	Primary antibodies
Short Description	Rabbit polyclonal antibody anti-Eukaryotic Translation Initiation Factor 4e-Binding Protein 1 (10-90) is suitable for use in Immunohistochemistry, Immunofluorescence and ELISA research applications.
Applications	IHC-P, IF-P, ELISA
Host/Source	Rabbit
Reactivity	Human, Rat, Mouse

PRODUCT PROPERTIES

Clonality	Polyclonal
Clone ID	
Concentration	1 mg/mL
Conjugation	Unconjugated
Purification	The antibody was affinity-purified from rabbit anti-serum by affinity-chromatography.
Dilution	IHC 1:100-1:300
Range	ELISA 1:40000
Formulation	PBS, 50% Glycerol, 0.5% BSA and 0.02% Sodium Azide.
Isotype	IgG
Storage	Store at -20°C for up to 1 year from the date of receipt, and avoid repeat freeze-thaw cycles.
Instruction	

TARGET INFORMATION

Gene ID	1978
Gene Symbol	EIF4EBP1
Uniprot ID	4EBP1_HUMAN
Immunogen	The antiserum was produced against synthesized peptide derived from human EIF4EBP1 at amino acid range 36-85
Immunogen Region	10-90
Specificity	EIF4EBP1 polyclonal antibody (Eukaryotic Translation Initiation Factor 4e-Binding Protein 1) binds to endogenous Eukaryotic Translation Initiation Factor 4e-Binding Protein 1 at the amino acid region 10-90.
Immunogen Sequence	



Immunohistochemistry analysis of paraffin-embedded human colon carcinoma, using 4E-BP1 Antibody. The picture on the right is blocked with the synthesized peptide.

This product is suitable for in-vitro studies under the RESEARCH USE ONLY [RUO] licence. This product must not be used as for diagnostic or other medical purposes.
St John's Laboratory Ltd, Knowledge Dock Business Centre, University Way, London, E16 2RD | Tel: 0208 223 3081