

Anti-EIF4EBP1 antibody (10-90) (STJ91387)

STJ91387

GENERAL INFORMATION

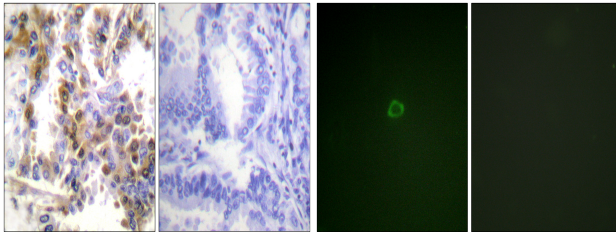
Product Type	Primary antibodies
Short Description	Rabbit polyclonal antibody anti-Eukaryotic Translation Initiation Factor 4e-Binding Protein 1 (10-90) is suitable for use in Immunohistochemistry, Immunofluorescence, Immunocytochemistry and ELISA research applications.
Applications	IHC-P, IF, ICC, ELISA
Host/Source	Rabbit
Reactivity	Human, Mouse, Rat

PRODUCT PROPERTIES

Clonality	Polyclonal
Clone ID	
Concentration	1 mg/mL
Conjugation	Unconjugated
Purification	The antibody was affinity-purified from rabbit anti-serum by affinity-chromatography.
Dilution Range	IHC 1:100-1:300 IF 1:200-1:1000 ELISA 1:5000
Formulation	PBS, 50% Glycerol, 0.5% BSA and 0.02% Sodium Azide.
Isotype	IgG
Storage Instruction	Store at -20°C for up to 1 year from the date of receipt, and avoid repeat freeze-thaw cycles.

TARGET INFORMATION

Gene ID	1978
Gene Symbol	EIF4EBP1
Uniprot ID	4EBP1_HUMAN
Immunogen Region	The antiserum was produced against synthesized peptide derived from human 4E-BP1 at amino acid range 2-51 10-90
Specificity	EIF4EBP1 polyclonal antibody (Eukaryotic Translation Initiation Factor 4e-Binding Protein 1) binds to endogenous Eukaryotic Translation Initiation Factor 4e-Binding Protein 1 at the amino acid region 10-90.
Immunogen Sequence	



Immunohistochemistry analysis of paraffin-embedded human lung carcinoma tissue, using 4E-BP1 Antibody. The picture on the right is blocked with the synthesized peptide.

Immunofluorescence analysis of A549 cells, using 4E-BP1 Antibody. The picture on the right is blocked with the synthesized peptide.