

Anti-HSD17B11 antibody (40-120 Internal) (STJ91378)

STJ91378

GENERAL INFORMATION

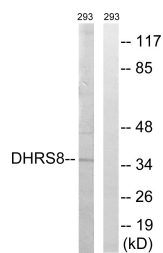
Product Type	Primary antibodies
Short Description	Rabbit polyclonal antibody anti-Estradiol 17-Beta-Dehydrogenase 11 (40-120 Internal) is suitable for use in Western Blot and ELISA research applications.
Applications	WB, ELISA
Host/Source	Rabbit
Reactivity	Human, Rat, Mouse

PRODUCT PROPERTIES

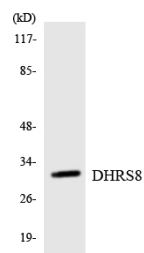
Clonality	Polyclonal
Clone ID	
Concentration	1 mg/mL
Conjugation	Unconjugated
Purification	The antibody was affinity-purified from rabbit anti-serum by affinity-chromatography.
Dilution Range	WB 1:500-1:2000 ELISA 1:5000
Formulation	PBS, 50% Glycerol, 0.5% BSA and 0.02% Sodium Azide.
Isotype	IgG
Storage	Store at -20°C for up to 1 year from the date of receipt, and avoid repeat freeze-thaw cycles.
Instruction	

TARGET INFORMATION

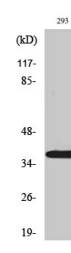
Gene ID	51170
Gene Symbol	HSD17B11
Uniprot ID	DHB11_HUMAN
Immunogen	The antiserum was produced against synthesized peptide derived from human DHRS8 at amino acid range 71-120
Immunogen Region	40-120 Internal
Specificity	HSD17B11 polyclonal antibody (Estradiol 17-Beta-Dehydrogenase 11) binds to endogenous Estradiol 17-Beta-Dehydrogenase 11 at the amino acid region 40-120 Internal.
Immunogen Sequence	



Western blot analysis of lysates from 293 cells, using DHRS8 Antibody. The lane on the right is blocked with the synthesized peptide.



Western blot analysis of the lysates from RAW264.7 cells using DHRS8 antibody.



Western blot analysis of various cells using 17 Beta-HSD11 Polyclonal Antibody

This product is suitable for in-vitro studies under the RESEARCH USE ONLY [RUO] licence. This product must not be used as for diagnostic or other medical purposes.
St John's Laboratory Ltd, Knowledge Dock Business Centre, University Way, London, E16 2RD | Tel: 0208 223 3081