

Anti-YWHAE antibody (180-260 C-Term) (STJ91370)

STJ91370

GENERAL INFORMATION

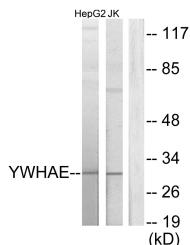
Product Type	Primary antibodies
Short Description	Rabbit polyclonal antibody anti-14-3-3 Protein Epsilon (180-260 C-Term) is suitable for use in Western Blot, Immunohistochemistry, Immunofluorescence, Immunocytochemistry and ELISA research applications.
Applications	WB, IHC-P, IF, ICC, ELISA
Host/Source	Rabbit
Reactivity	Human, Mouse, Rat

PRODUCT PROPERTIES

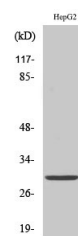
Clonality	Polyclonal
Clone ID	
Concentration	1 mg/mL
Conjugation	Unconjugated
Purification	The antibody was affinity-purified from rabbit anti-serum by affinity-chromatography.
Dilution Range	WB 1:500-1:2000 IHC 1:100-1:300 IF 1:200-1:1000 ELISA 1:20000
Formulation	PBS, 50% Glycerol, 0.5% BSA and 0.02% Sodium Azide.
Isotype	IgG
Storage Instruction	Store at -20°C for up to 1 year from the date of receipt, and avoid repeat freeze-thaw cycles.

TARGET INFORMATION

Gene ID	7531
Gene Symbol	YWHAE
Uniprot ID	1433E_HUMAN
Immunogen	The antiserum was produced against synthesized peptide derived from human 14-3-3 epsilon at amino acid range 206-255
Immunogen Region	180-260 C-Term
Specificity	YWHAE polyclonal antibody (14-3-3 Protein Epsilon) binds to endogenous 14-3-3 Protein Epsilon at the amino acid region 180-260 C-Term.
Immunogen Sequence	



Western blot analysis of lysates from HepG2 and Jurkat cells, using 14-3-3 epsilon Antibody. The lane on the right is blocked with the synthesized peptide.



Western blot analysis of various cells using 14-3-3 Epsilon Polyclonal Antibody diluted at 1: 1000

This product is suitable for in-vitro studies under the RESEARCH USE ONLY [RUO] licence. This product must not be used as for diagnostic or other medical purposes.
St John's Laboratory Ltd, Knowledge Dock Business Centre, University Way, London, E16 2RD | Tel: 0208 223 3081