

Anti-Phospho-EPOR-Tyr426 antibody (370-450) (STJ91365)

STJ91365

GENERAL INFORMATION

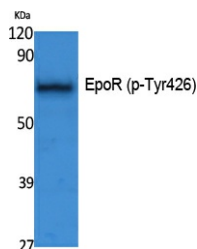
Product Type	Primary antibodies
Short Description	Rabbit polyclonal antibody anti-Phospho-Erythropoietin Receptor-Tyr426 (370-450) is suitable for use in Western Blot and ELISA research applications.
Applications	WB, ELISA
Host/Source	Rabbit
Reactivity	Human, Mouse, Rat

PRODUCT PROPERTIES

Clonality	Polyclonal
Clone ID	
Concentration	1 mg/mL
Conjugation	Unconjugated
Purification	The antibody was affinity-purified from rabbit anti-serum by affinity-chromatography.
Dilution Range	WB 1:500-1:2000 ELISA 1:20000
Formulation	PBS, 50% Glycerol, 0.5% BSA and 0.02% Sodium Azide.
Isotype	IgG
Storage Instruction	Store at -20°C for up to 1 year from the date of receipt, and avoid repeat freeze-thaw cycles.

TARGET INFORMATION

Gene ID	2057
Gene Symbol	EPOR
Uniprot ID	EPOR_HUMAN
Immunogen	Synthesized phospho-peptide around the phosphorylation site of human EpoR (phospho Tyr426)
Immunogen Region	370-450
Specificity	Phospho-EPOR-Tyr426 polyclonal antibody (Erythropoietin Receptor) binds to endogenous Erythropoietin Receptor at the amino acid region 370-450 only when phosphorylated at Tyr426.
Immunogen Sequence	



Western blot analysis of extracts from K562 cells, using Phospho-EpoR (Y426) Polyclonal Antibody.