

Anti-Phospho-CTNNB1-Ser552 antibody (490-570) (STJ91364)

STJ91364

GENERAL INFORMATION

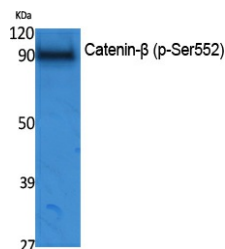
Product Type	Primary antibodies
Short Description	Rabbit polyclonal antibody anti-Phospho-Catenin Beta-1-Ser552 (490-570) is suitable for use in Western Blot and ELISA research applications.
Applications	WB, ELISA
Host/Source	Rabbit
Reactivity	Human, Mouse, Rat

PRODUCT PROPERTIES

Clonality	Polyclonal
Clone ID	
Concentration	1 mg/mL
Conjugation	Unconjugated
Purification	The antibody was affinity-purified from rabbit anti-serum by affinity-chromatography.
Dilution Range	WB 1:500-1:2000 ELISA 1:40000
Formulation	PBS, 50% Glycerol, 0.5% BSA and 0.02% Sodium Azide.
Isotype	IgG
Storage	Store at -20°C for up to 1 year from the date of receipt, and avoid repeat freeze-thaw cycles.
Instruction	

TARGET INFORMATION

Gene ID	1499
Gene Symbol	CTNNB1
Uniprot ID	CTNB1_HUMAN
Immunogen	Synthesized phospho-peptide around the phosphorylation site of human Catenin-Beta (phospho Ser552)
Immunogen Region	490-570
Specificity	Phospho-CTNNB1-Ser552 polyclonal antibody (Catenin Beta-1) binds to endogenous Catenin Beta-1 at the amino acid region 490-570 only when phosphorylated at Ser552.
Immunogen Sequence	



Western blot analysis of extracts from NIH-3T3 cells, using Phospho-Catenin-Beta (S552) Polyclonal Antibody.