

Anti-Phospho-MAP3K11-Ser674 antibody (610-690) (STJ91362)

STJ91362

GENERAL INFORMATION

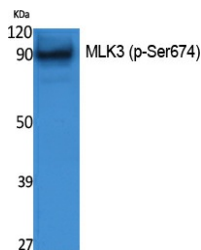
Product Type	Primary antibodies
Short Description	Rabbit polyclonal antibody anti-Phospho-Mitogen-Activated Protein Kinase Kinase Kinase 11-Ser674 (610-690) is suitable for use in Western Blot and ELISA research applications.
Applications	WB, ELISA
Host/Source	Rabbit
Reactivity	Human, Mouse, Rat

PRODUCT PROPERTIES

Clonality	Polyclonal
Clone ID	
Concentration	1 mg/mL
Conjugation	Unconjugated
Purification	The antibody was affinity-purified from rabbit anti-serum by affinity-chromatography.
Dilution	WB 1:500-1:2000
Range	ELISA 1:5000
Formulation	PBS, 50% Glycerol, 0.5% BSA and 0.02% Sodium Azide.
Isotype	IgG
Storage	Store at -20°C for up to 1 year from the date of receipt, and avoid repeat freeze-thaw cycles.
Instruction	

TARGET INFORMATION

Gene ID	4296
Gene Symbol	MAP3K11
Uniprot ID	M3K11_HUMAN
Immunogen	Synthesized phospho-peptide around the phosphorylation site of human MLK3 (phospho Ser674)
Immunogen Region	610-690
Specificity	Phospho-MAP3K11-Ser674 polyclonal antibody (Mitogen-Activated Protein Kinase Kinase Kinase 11) binds to endogenous Mitogen-Activated Protein Kinase Kinase Kinase 11 at the amino acid region 610-690 only when phosphorylated at Ser674.
Immunogen Sequence	



Western blot analysis of extracts from NIH-3T3 cells, using Phospho-MLK3 (S674) Polyclonal Antibody.

This product is suitable for in-vitro studies under the RESEARCH USE ONLY [RUO] licence. This product must not be used as for diagnostic or other medical purposes.
St John's Laboratory Ltd, Knowledge Dock Business Centre, University Way, London, E16 2RD | Tel: 0208 223 3081