

Anti-Phospho-LEPR-Tyr1141 antibody (1080-1160) (STJ91360)

STJ91360

GENERAL INFORMATION

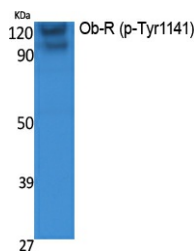
Product Type	Primary antibodies
Short Description	Rabbit polyclonal antibody anti-Phospho-Leptin Receptor-Tyr1141 (1080-1160) is suitable for use in Western Blot and ELISA research applications.
Applications	WB, ELISA
Host/Source	Rabbit
Reactivity	Human, Mouse

PRODUCT PROPERTIES

Clonality	Polyclonal
Clone ID	
Concentration	1 mg/mL
Conjugation	Unconjugated
Purification	The antibody was affinity-purified from rabbit anti-serum by affinity-chromatography.
Dilution Range	WB 1:500-1:2000 ELISA 1:5000
Formulation	PBS, 50% Glycerol, 0.5% BSA and 0.02% Sodium Azide.
Isotype	IgG
Storage Instruction	Store at -20°C for up to 1 year from the date of receipt, and avoid repeat freeze-thaw cycles.

TARGET INFORMATION

Gene ID	3953
Gene Symbol	LEPR
Uniprot ID	LEPR_HUMAN
Immunogen	Synthesized phospho-peptide around the phosphorylation site of human Ob-R (phospho Tyr1141)
Immunogen Region	1080-1160
Specificity	Phospho-LEPR-Tyr1141 polyclonal antibody (Leptin Receptor) binds to endogenous Leptin Receptor at the amino acid region 1080-1160 only when phosphorylated at Tyr1141.
Immunogen Sequence	



Western blot analysis of extracts from K562 cells, using Phospho-Ob-R (Y1141) Polyclonal Antibody.

This product is suitable for in-vitro studies under the RESEARCH USE ONLY [RUO] licence. This product must not be used as for diagnostic or other medical purposes.
St John's Laboratory Ltd, Knowledge Dock Business Centre, University Way, London, E16 2RD | Tel: 0208 223 3081