

Anti-Phospho-TNS1-Tyr1326 antibody (STJ91358)

STJ91358

GENERAL INFORMATION

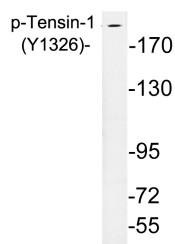
Product Type	Primary antibodies
Short Description	Rabbit polyclonal antibody anti-Phospho-Tensin-1-Tyr1326 is suitable for use in Western Blot and ELISA research applications.
Applications	WB, ELISA
Host/Source	Rabbit
Reactivity	Human, Mouse

PRODUCT PROPERTIES

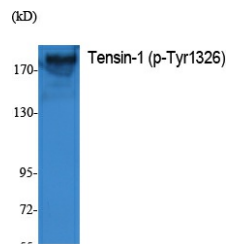
Clonality	Polyclonal
Clone ID	
Concentration	1 mg/mL
Conjugation	Unconjugated
Purification	The antibody was affinity-purified from rabbit anti-serum by affinity-chromatography.
Dilution Range	WB 1:500-1:2000 ELISA 1:20000
Formulation	PBS, 50% Glycerol, 0.5% BSA and 0.02% Sodium Azide.
Isotype	IgG
Storage Instruction	Store at -20°C for up to 1 year from the date of receipt, and avoid repeat freeze-thaw cycles.

TARGET INFORMATION

Gene ID	7145
Gene Symbol	TNS1
Uniprot ID	TENS1_HUMAN
Immunogen	Synthesized phospho-peptide around the phosphorylation site of human Tensin-1 (phospho Tyr1326)
Immunogen Region	
Specificity	Phospho-TNS1-Tyr1326 polyclonal antibody (Tensin-1) binds to endogenous Tensin-1 only when phosphorylated at Tyr1326.
Immunogen Sequence	



Western blot analysis of lysates from A10 cells, using phospho-Tensin-1 (Phospho-Tyr1326) antibody.



Western blot analysis of extracts from K562 cells, using Phospho-Tensin-1 (Y1326) Polyclonal Antibody.

This product is suitable for in-vitro studies under the RESEARCH USE ONLY [RUO] licence. This product must not be used as for diagnostic or other medical purposes.
St John's Laboratory Ltd, Knowledge Dock Business Centre, University Way, London, E16 2RD | Tel: 0208 223 3081