

Anti-Phospho-S1PR1-Thr236 antibody (180-260) (STJ91353)

STJ91353

GENERAL INFORMATION

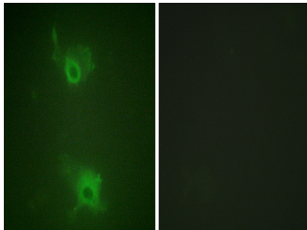
Product Type	Primary antibodies
Short Description	Rabbit polyclonal antibody anti-Phospho-Sphingosine 1-Phosphate Receptor 1-Thr236 (180-260) is suitable for use in Western Blot, Immunofluorescence, Immunocytochemistry and ELISA research applications.
Applications	WB, IF, ICC, ELISA
Host/Source	Rabbit
Reactivity	Human, Mouse, Rat

PRODUCT PROPERTIES

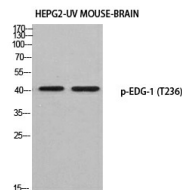
Clonality	Polyclonal
Clone ID	
Concentration	1 mg/mL
Conjugation	Unconjugated
Purification	The antibody was affinity-purified from rabbit anti-serum by affinity-chromatography.
Dilution	IF 1:200-1:1000
Range	ELISA 1:10000
Formulation	PBS, 50% Glycerol, 0.5% BSA and 0.02% Sodium Azide.
Isotype	IgG
Storage	Store at -20°C for up to 1 year from the date of receipt, and avoid repeat freeze-thaw cycles.
Instruction	

TARGET INFORMATION

Gene ID	1901
Gene Symbol	S1PR1
Uniprot ID	S1PR1_HUMAN
Immunogen	The antiserum was produced against synthesized peptide derived from human S1P Receptor EDG1 around the phosphorylation site of Thr236 at amino acid range 206-255
Immunogen Region	180-260
Specificity	Phospho-S1PR1-Thr236 polyclonal antibody (Sphingosine 1-Phosphate Receptor 1) binds to endogenous Sphingosine 1-Phosphate Receptor 1 at the amino acid region 180-260 only when phosphorylated at Thr236.
Immunogen Sequence	



Immunofluorescence analysis of COS7 cells, using S1P Receptor EDG1 (Phospho-Thr236) Antibody. The picture on the right is blocked with the phospho peptide.



Western blot analysis of HEPG2-UV mouse brain using p-EDG-1 (T236) antibody. Antibody was diluted at 1:500