

Anti-Phospho-TGFBR1-Ser165 antibody (100-180) (STJ91351)

STJ91351

GENERAL INFORMATION

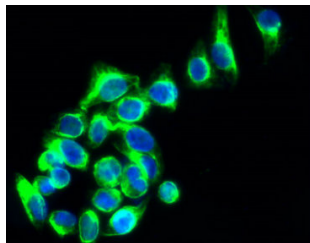
Product Type	Primary antibodies
Short Description	Rabbit polyclonal antibody anti-Phospho-Tgf-Beta Receptor Type-1-Ser165 (100-180) is suitable for use in Western Blot, Immunohistochemistry, Immunofluorescence, Immunocytochemistry and ELISA research applications.
Applications	WB, IHC-P, IF, ICC, ELISA
Host/Source	Rabbit
Reactivity	Human, Mouse, Rat

PRODUCT PROPERTIES

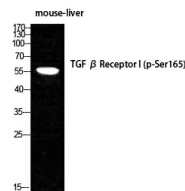
Clonality	Polyclonal
Clone ID	
Concentration	1 mg/mL
Conjugation	Unconjugated
Purification	The antibody was affinity-purified from rabbit anti-serum by affinity-chromatography.
Dilution Range	WB 1:500-2000 IF 1:50-300 IHC 1:50-300
Formulation	PBS, 50% Glycerol, 0.5% BSA and 0.02% Sodium Azide.
Isotype	IgG
Storage Instruction	Store at -20°C for up to 1 year from the date of receipt, and avoid repeat freeze-thaw cycles.

TARGET INFORMATION

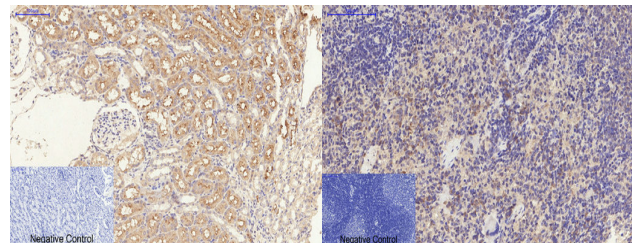
Gene ID	7046
Gene Symbol	TGFBR1
Uniprot ID	TGFR1_HUMAN
Immunogen	The antiserum was produced against synthesized peptide derived from human TGF beta Receptor I around the phosphorylation site of Ser165 at amino acid range 131-180
Immunogen Region	100-180
Specificity	Phospho-TGFBR1-Ser165 polyclonal antibody (Tgf-Beta Receptor Type-1) binds to endogenous Tgf-Beta Receptor Type-1 at the amino acid region 100-180 only when phosphorylated at Ser165.
Immunogen Sequence	



Immunofluorescence analysis of HepG2 cells. Antibody diluted at 1:50. The picture on the right is blocked with the synthesized peptide.



Western blot analysis of MOUSE-LIVER cells using Phospho-TGF Beta RI (S165) Polyclonal Antibody diluted at 1: 1000



Immunohistochemical analysis of paraffin-embedded Rat-kidney tissue. 1. TGF Beta RI (phospho Ser165) Polyclonal Antibody was diluted at 1:200 (4°C, overnight). 2. Sodium citrate pH 6.0 was used for antibody retrieval (>95°C, 20min). 3. Secondary antibody was diluted at 1:200 (room temperature, 30min). Negative control was used by secondary antibody only.

Immunohistochemical analysis of paraffin-embedded Rat-spleen tissue. 1. TGF Beta RI (phospho Ser165) Polyclonal Antibody was diluted at 1:200 (4°C, overnight). 2. Sodium citrate pH 6.0 was used for antibody retrieval (>95°C, 20min). 3. Secondary antibody was diluted at 1:200 (room temperature, 30min). Negative control was used by secondary antibody only.

This product is suitable for in-vitro studies under the RESEARCH USE ONLY [RUO] licence. This product must not be used as for diagnostic or other medical purposes.

St John's Laboratory Ltd, Knowledge Dock Business Centre, University Way, London, E16 2RD | Tel: 0208 223 3081