

Anti-Phospho-MCL1-Ser159 antibody (100-180) (STJ91350)

STJ91350

GENERAL INFORMATION

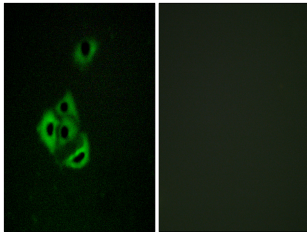
Product Type	Primary antibodies
Short Description	Rabbit polyclonal antibody anti-Phospho-Induced Myeloid Leukemia Cell Differentiation Protein Mcl-1-Ser159 (100-180) is suitable for use in Western Blot, Immunofluorescence, Immunocytochemistry and ELISA research applications.
Applications	WB, IF, ICC, ELISA
Host/Source	Rabbit
Reactivity	Human, Mouse

PRODUCT PROPERTIES

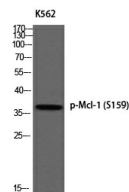
Clonality	Polyclonal
Clone ID	
Concentration	1 mg/mL
Conjugation	Unconjugated
Purification	The antibody was affinity-purified from rabbit anti-serum by affinity-chromatography.
Dilution	IF 1:200-1:1000
Range	ELISA 1:10000
Formulation	PBS, 50% Glycerol, 0.5% BSA and 0.02% Sodium Azide.
Isotype	IgG
Storage	Store at -20°C for up to 1 year from the date of receipt, and avoid repeat freeze-thaw cycles.
Instruction	

TARGET INFORMATION

Gene ID	4170
Gene Symbol	MCL1
Uniprot ID	MCL1_HUMAN
Immunogen	The antiserum was produced against synthesized peptide derived from human MCL1 around the phosphorylation site of Ser159 at amino acid range 125-174
Immunogen Region	100-180
Specificity	Phospho-MCL1-Ser159 polyclonal antibody (Induced Myeloid Leukemia Cell Differentiation Protein Mcl-1) binds to endogenous Induced Myeloid Leukemia Cell Differentiation Protein Mcl-1 at the amino acid region 100-180 only when phosphorylated at Ser159.
Immunogen Sequence	



Immunofluorescence analysis of A549 cells, using MCL1 (Phospho-Ser159) Antibody. The picture on the right is blocked with the phospho peptide.



Western blot analysis of K562 using p-Mcl-1 (S159) antibody.

This product is suitable for in-vitro studies under the RESEARCH USE ONLY [RUO] licence. This product must not be used as for diagnostic or other medical purposes.
 St John's Laboratory Ltd, Knowledge Dock Business Centre, University Way, London, E16 2RD | Tel: 0208 223 3081