

Anti-Phospho-RB1-Ser249 antibody (190-270) (STJ91344)

STJ91344

GENERAL INFORMATION

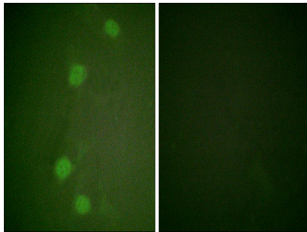
| | |
|--------------------------|--|
| Product Type | Primary antibodies |
| Short Description | Rabbit polyclonal antibody anti-Phospho-Retinoblastoma-Associated Protein-Ser249 (190-270) is suitable for use in Immunofluorescence, Immunocytochemistry and ELISA research applications. |
| Applications | IF, ICC, ELISA |
| Host/Source | Rabbit |
| Reactivity | Human, Mouse, Rat |

PRODUCT PROPERTIES

| | |
|----------------------|--|
| Clonality | Polyclonal |
| Clone ID | |
| Concentration | 1 mg/mL |
| Conjugation | Unconjugated |
| Purification | The antibody was affinity-purified from rabbit anti-serum by affinity-chromatography. |
| Dilution | IF 1:200-1:1000 |
| Range | ELISA 1:5000 |
| Formulation | PBS, 50% Glycerol, 0.5% BSA and 0.02% Sodium Azide. |
| Isotype | IgG |
| Storage | Store at -20°C for up to 1 year from the date of receipt, and avoid repeat freeze-thaw cycles. |
| Instruction | |

TARGET INFORMATION

| | |
|---------------------------|---|
| Gene ID | 5925 |
| Gene Symbol | RB1 |
| Uniprot ID | RB_HUMAN |
| Immunogen | The antiserum was produced against synthesized peptide derived from human Retinoblastoma around the phosphorylation site of Ser249 at amino acid range 221-270 |
| Immunogen Region | 190-270 |
| Specificity | Phospho-RB1-Ser249 polyclonal antibody (Retinoblastoma-Associated Protein) binds to endogenous Retinoblastoma-Associated Protein at the amino acid region 190-270 only when phosphorylated at Ser249. |
| Immunogen Sequence | |



Immunofluorescence analysis of HeLa cells, using Retinoblastoma (Phospho-Ser249) Antibody. The picture on the right is blocked with the phospho peptide.