

## Anti-Phospho-Histone H4-Ser47 antibody (30-110) (STJ91343)

STJ91343

### GENERAL INFORMATION

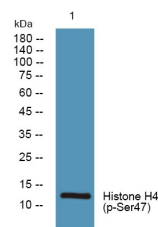
<b>Product Type</b>	Primary antibodies
<b>Short Description</b>	Rabbit polyclonal antibody anti-Phospho-Histone H4-Ser47 (30-110) is suitable for use in Immunofluorescence, Immunocytochemistry, Immunohistochemistry, Western Blot and ELISA research applications.
<b>Applications</b>	IF, ICC, IHC-P, WB, ELISA
<b>Host/Source</b>	Rabbit
<b>Reactivity</b>	Human, Mouse, Rat

### PRODUCT PROPERTIES

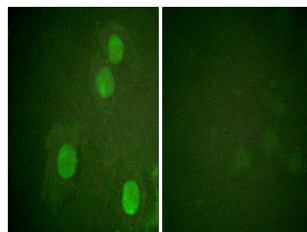
<b>Clonality</b>	Polyclonal
<b>Clone ID</b>	
<b>Concentration</b>	1 mg/mL
<b>Conjugation</b>	Unconjugated
<b>Purification</b>	The antibody was affinity-purified from rabbit anti-serum by affinity-chromatography.
<b>Dilution Range</b>	WB 1:500-2000 IF 1:200-1:1000 ELISA 1:5000
<b>Formulation</b>	PBS, 50% Glycerol, 0.5% BSA and 0.02% Sodium Azide.
<b>Isotype</b>	IgG
<b>Storage Instruction</b>	Store at -20°C for up to 1 year from the date of receipt, and avoid repeat freeze-thaw cycles.

### TARGET INFORMATION

<b>Gene ID</b>	<a href="#">121504/554313/8294/8359/8360/8361/8362/8363/8364/8365/8366/8367/8368/8370</a>
<b>Gene Symbol</b>	<a href="#">H4C1.H4C2.H4C3.H4C4.H4C5.H4C6.H4C8.H4C9.H4C11.H4C12.H4C13.H4C14.H4C15.H4-16</a>
<b>Uniprot ID</b>	<a href="#">H4_HUMAN</a>
<b>Immunogen</b>	The antiserum was produced against synthesized peptide derived from human Histone H4 around the phosphorylation site of Ser47 at amino acid range 13-62
<b>Immunogen Region</b>	30-110
<b>Specificity</b>	Phospho-Histone H4-Ser47 polyclonal antibody (Histone H4) binds to endogenous Histone H4 at the amino acid region 30-110 only when phosphorylated at Ser47.
<b>Immunogen Sequence</b>	



Western blot analysis of lysates from A431 cells. primary antibody was diluted at 1:1000, 4°C over night



Immunofluorescence analysis of HUVEC cells, using Histone H4 (Phospho-Ser47) Antibody. The picture on the right is blocked with the phospho peptide.

This product is suitable for in-vitro studies under the RESEARCH USE ONLY [RUO] licence. This product must not be used as for diagnostic or other medical purposes.  
St John's Laboratory Ltd, Knowledge Dock Business Centre, University Way, London, E16 2RD | Tel: 0208 223 3081