

Anti-Phospho-HCK-Tyr410 antibody (350-430) (STJ91341)

STJ91341

GENERAL INFORMATION

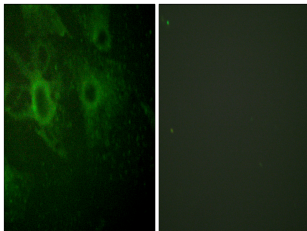
Product Type	Primary antibodies
Short Description	Rabbit polyclonal antibody anti-Phospho-Tyrosine-Protein Kinase Hck-Tyr410 (350-430) is suitable for use in Immunohistochemistry, Immunofluorescence, Immunocytochemistry and ELISA research applications.
Applications	IHC-P, IF, ICC, ELISA
Host/Source	Rabbit
Reactivity	Human, Mouse, Rat

PRODUCT PROPERTIES

Clonality	Polyclonal
Clone ID	
Concentration	1 mg/mL
Conjugation	Unconjugated
Purification	The antibody was affinity-purified from rabbit anti-serum by affinity-chromatography.
Dilution Range	IHC 1:100-1:300 IF 1:200-1:1000 ELISA 1:20000
Formulation	PBS, 50% Glycerol, 0.5% BSA and 0.02% Sodium Azide.
Isotype	IgG
Storage Instruction	Store at -20°C for up to 1 year from the date of receipt, and avoid repeat freeze-thaw cycles.

TARGET INFORMATION

Gene ID	3055
Gene Symbol	HCK
Uniprot ID	HCK_HUMAN
Immunogen	The antiserum was produced against synthesized peptide derived from human HCK around the phosphorylation site of Tyr410 at amino acid range 381-430
Immunogen Region	350-430
Specificity	Phospho-HCK-Tyr410 polyclonal antibody (Tyrosine-Protein Kinase Hck) binds to endogenous Tyrosine-Protein Kinase Hck at the amino acid region 350-430 only when phosphorylated at Tyr410.
Immunogen Sequence	



Immunofluorescence analysis of HeLa cells, using HCK (Phospho-Tyr410) Antibody. The picture on the right is blocked with the phospho peptide.