

Anti-Phospho-ESR1-Ser305 antibody (250-330) (STJ91336)

STJ91336

GENERAL INFORMATION

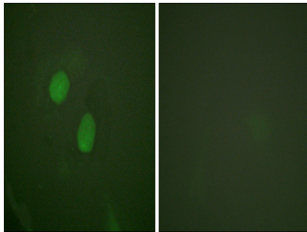
Product Type	Primary antibodies
Short Description	Rabbit polyclonal antibody anti-Phospho-Estrogen Receptor-Ser305 (250-330) is suitable for use in Immunofluorescence, Immunocytochemistry and ELISA research applications.
Applications	IF, ICC, ELISA
Host/Source	Rabbit
Reactivity	Human, Rat, Mouse

PRODUCT PROPERTIES

Clonality	Polyclonal
Clone ID	
Concentration	1 mg/mL
Conjugation	Unconjugated
Purification	The antibody was affinity-purified from rabbit anti-serum by affinity-chromatography.
Dilution Range	IF 1:200-1:1000 ELISA 1:20000
Formulation	PBS, 50% Glycerol, 0.5% BSA and 0.02% Sodium Azide.
Isotype	IgG
Storage	Store at -20°C for up to 1 year from the date of receipt, and avoid repeat freeze-thaw cycles.
Instruction	

TARGET INFORMATION

Gene ID	2099
Gene Symbol	ESR1
Uniprot ID	ESR1_HUMAN
Immunogen	The antiserum was produced against synthesized peptide derived from human Estrogen Receptor-alpha around the phosphorylation site of Ser305 at amino acid range 276-325
Immunogen Region	250-330
Specificity	Phospho-ESR1-Ser305 polyclonal antibody (Estrogen Receptor) binds to endogenous Estrogen Receptor at the amino acid region 250-330 only when phosphorylated at Ser305.
Immunogen Sequence	



Immunofluorescence analysis of HeLa cells treated with EGF (200nM, 5'), using Estrogen Receptor-alpha (Phospho-Ser305) Antibody. The picture on the right is blocked with the phospho peptide.