

Anti-Phospho-ERBB2-Thr686 antibody (630-710) (STJ91335)

STJ91335

GENERAL INFORMATION

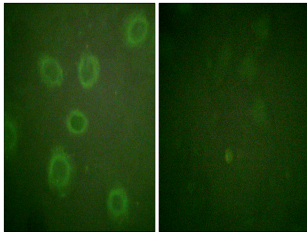
Product Type	Primary antibodies
Short Description	Rabbit polyclonal antibody anti-Phospho-Receptor Tyrosine-Protein Kinase Erbb-2-Thr686 (630-710) is suitable for use in Immunofluorescence, Immunocytochemistry and ELISA research applications.
Applications	IF, ICC, ELISA
Host/Source	Rabbit
Reactivity	Human, Mouse, Rat

PRODUCT PROPERTIES

Clonality	Polyclonal
Clone ID	
Concentration	1 mg/mL
Conjugation	Unconjugated
Purification	The antibody was affinity-purified from rabbit anti-serum by affinity-chromatography.
Dilution	IF 1:200-1:1000
Range	ELISA 1:5000
Formulation	PBS, 50% Glycerol, 0.5% BSA and 0.02% Sodium Azide.
Isotype	IgG
Storage	Store at -20°C for up to 1 year from the date of receipt, and avoid repeat freeze-thaw cycles.
Instruction	

TARGET INFORMATION

Gene ID	2064
Gene Symbol	ERBB2
Uniprot ID	ERBB2_HUMAN
Immunogen	The antiserum was produced against synthesized peptide derived from human HER2 around the phosphorylation site of Thr686 at amino acid range 661-710
Immunogen Region	630-710
Specificity	Phospho-ERBB2-Thr686 polyclonal antibody (Receptor Tyrosine-Protein Kinase Erbb-2) binds to endogenous Receptor Tyrosine-Protein Kinase Erbb-2 at the amino acid region 630-710 only when phosphorylated at Thr686.
Immunogen Sequence	



Immunofluorescence analysis of HUVEC cells, using HER2 (Phospho-Thr686) Antibody. The picture on the right is blocked with the phospho peptide.