

Anti-Phospho-PRKDC-Thr2638 antibody (2580-2660) (STJ91334)

STJ91334

GENERAL INFORMATION

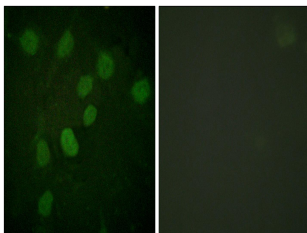
Product Type	Primary antibodies
Short Description	Rabbit polyclonal antibody anti-Phospho-Dna-Dependent Protein Kinase Catalytic Subunit-Thr2638 (2580-2660) is suitable for use in Immunofluorescence, Immunocytochemistry and ELISA research applications.
Applications	IF, ICC, ELISA
Host/Source	Rabbit
Reactivity	Human, Mouse

PRODUCT PROPERTIES

Clonality	Polyclonal
Clone ID	
Concentration	1 mg/mL
Conjugation	Unconjugated
Purification	The antibody was affinity-purified from rabbit anti-serum by affinity-chromatography.
Dilution	IF 1:200-1:1000
Range	ELISA 1:10000
Formulation	PBS, 50% Glycerol, 0.5% BSA and 0.02% Sodium Azide.
Isotype	IgG
Storage	Store at -20°C for up to 1 year from the date of receipt, and avoid repeat freeze-thaw cycles.
Instruction	

TARGET INFORMATION

Gene ID	5591
Gene Symbol	PRKDC
Uniprot ID	PRKDC_HUMAN
Immunogen	The antiserum was produced against synthesized peptide derived from human DNA-PK around the phosphorylation site of Thr2638 at amino acid range 2604-2653
Immunogen Region	2580-2660
Specificity	Phospho-PRKDC-Thr2638 polyclonal antibody (Dna-Dependent Protein Kinase Catalytic Subunit) binds to endogenous Dna-Dependent Protein Kinase Catalytic Subunit at the amino acid region 2580-2660 only when phosphorylated at Thr2638.
Immunogen Sequence	



Immunofluorescence analysis of HUVEC cells treated with serum 20% 30', using DNA-PK (Phospho-Thr2638) Antibody. The picture on the right is blocked with the phospho peptide.