

Anti-Phospho-CCNE2-Thr392 antibody (330-410) (STJ91333)

STJ91333

GENERAL INFORMATION

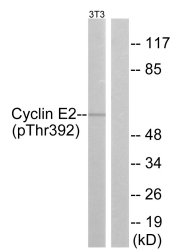
Product Type	Primary antibodies
Short Description	Rabbit polyclonal antibody anti-Phospho-G1/S-Specific Cyclin-E2-Thr392 (330-410) is suitable for use in Immunofluorescence, Immunocytochemistry and ELISA research applications.
Applications	IF, ICC, ELISA
Host/Source	Rabbit
Reactivity	Human, Mouse

PRODUCT PROPERTIES

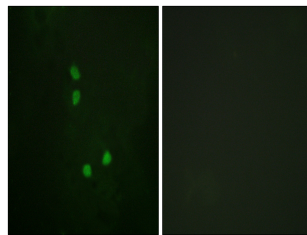
Clonality	Polyclonal
Clone ID	
Concentration	1 mg/mL
Conjugation	Unconjugated
Purification	The antibody was affinity-purified from rabbit anti-serum by affinity-chromatography.
Dilution Range	IF 1:200-1:1000 ELISA 1:10000
Formulation	PBS, 50% Glycerol, 0.5% BSA and 0.02% Sodium Azide.
Isotype	IgG
Storage Instruction	Store at -20°C for up to 1 year from the date of receipt, and avoid repeat freeze-thaw cycles.

TARGET INFORMATION

Gene ID	9134
Gene Symbol	CCNE2
Uniprot ID	CCNE2_HUMAN
Immunogen	The antiserum was produced against synthesized peptide derived from human Cyclin E2 around the phosphorylation site of Thr392 at amino acid range 355-404
Immunogen Region	330-410
Specificity	Phospho-CCNE2-Thr392 polyclonal antibody (G1/S-Specific Cyclin-E2) binds to endogenous G1/S-Specific Cyclin-E2 at the amino acid region 330-410 only when phosphorylated at Thr392.
Immunogen Sequence	



Western blot analysis of Cyclin E2 (Phospho-Thr392) Antibody. The lane on the right is blocked with the Cyclin E2 (Phospho-Thr392) peptide.



Immunofluorescence analysis of NIH/3T3 cells, using Cyclin E2 (Phospho-Thr392) Antibody. The picture on the right is blocked with the phospho peptide.