

Anti-Phospho-CENPA-Ser7 antibody (1-80) (STJ91332)

STJ91332

GENERAL INFORMATION

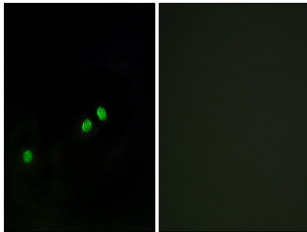
Product Type	Primary antibodies
Short Description	Rabbit polyclonal antibody anti-Phospho-Histone H3-Like Centromeric Protein A-Ser7 (1-80) is suitable for use in Immunofluorescence, Immunocytochemistry and ELISA research applications.
Applications	IF, ICC, ELISA
Host/Source	Rabbit
Reactivity	Human, Rat, Mouse

PRODUCT PROPERTIES

Clonality	Polyclonal
Clone ID	
Concentration	1 mg/mL
Conjugation	Unconjugated
Purification	The antibody was affinity-purified from rabbit anti-serum by affinity-chromatography.
Dilution	IF 1:200-1:1000
Range	ELISA 1:10000
Formulation	PBS, 50% Glycerol, 0.5% BSA and 0.02% Sodium Azide.
Isotype	IgG
Storage	Store at -20°C for up to 1 year from the date of receipt, and avoid repeat freeze-thaw cycles.
Instruction	

TARGET INFORMATION

Gene ID	1058
Gene Symbol	CENPA
Uniprot ID	CENPA_HUMAN
Immunogen	The antiserum was produced against synthesized peptide derived from human Centromeric Protein A around the phosphorylation site of Ser7 at amino acid range 1-50
Immunogen Region	1-80
Specificity	Phospho-CENPA-Ser7 polyclonal antibody (Histone H3-Like Centromeric Protein A) binds to endogenous Histone H3-Like Centromeric Protein A at the amino acid region 1-80 only when phosphorylated at Ser7.
Immunogen Sequence	



Immunofluorescence analysis of HeLa cells, using Centromeric Protein A (Phospho-Ser7) Antibody. The picture on the right is blocked with the phospho peptide.