

## Anti-Phospho-ITGB2-Thr758 antibody (690-770) (STJ91331)

STJ91331

### GENERAL INFORMATION

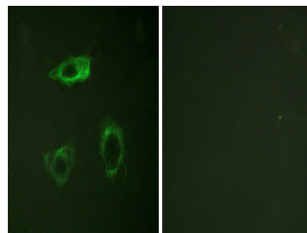
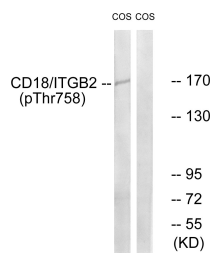
<b>Product Type</b>	Primary antibodies
<b>Short Description</b>	Rabbit polyclonal antibody anti-Phospho-Integrin Beta-2-Thr758 (690-770) is suitable for use in Immunofluorescence, Immunocytochemistry and ELISA research applications.
<b>Applications</b>	IF, ICC, ELISA
<b>Host/Source</b>	Rabbit
<b>Reactivity</b>	Human, Mouse, Rat

### PRODUCT PROPERTIES

<b>Clonality</b>	Polyclonal
<b>Clone ID</b>	
<b>Concentration</b>	1 mg/mL
<b>Conjugation</b>	Unconjugated
<b>Purification</b>	The antibody was affinity-purified from rabbit anti-serum by affinity-chromatography.
<b>Dilution Range</b>	IF 1:200-1:1000 ELISA 1:40000
<b>Formulation</b>	PBS, 50% Glycerol, 0.5% BSA and 0.02% Sodium Azide.
<b>Isotype</b>	IgG
<b>Storage</b>	Store at -20°C for up to 1 year from the date of receipt, and avoid repeat freeze-thaw cycles.
<b>Instruction</b>	

### TARGET INFORMATION

<b>Gene ID</b>	3689
<b>Gene Symbol</b>	ITGB2
<b>Uniprot ID</b>	ITB2_HUMAN
<b>Immunogen</b>	The antiserum was produced against synthesized peptide derived from human CD18/ITGB2 around the phosphorylation site of Thr758 at amino acid range 720-769
<b>Immunogen Region</b>	690-770
<b>Specificity</b>	Phospho-ITGB2-Thr758 polyclonal antibody (Integrin Beta-2) binds to endogenous Integrin Beta-2 at the amino acid region 690-770 only when phosphorylated at Thr758.
<b>Immunogen Sequence</b>	



This product is suitable for in-vitro studies under the RESEARCH USE ONLY [RUO] licence. This product must not be used as for diagnostic or other medical purposes.  
St John's Laboratory Ltd, Knowledge Dock Business Centre, University Way, London, E16 2RD | Tel: 0208 223 3081