

Anti-Phospho-Histone H3-Thr11 antibody (1-80) (STJ91327)

STJ91327

GENERAL INFORMATION

Product Type	Primary antibodies
Short Description	Rabbit polyclonal antibody anti-Phospho-Histone H3.1 and Histone H3.2 and Histone H3.3-Thr11 (1-80) is suitable for use in Immunofluorescence, Immunocytochemistry and ELISA research applications.
Applications	IF, ICC, ELISA
Host/Source	Rabbit
Reactivity	Human, Mouse, Rat

PRODUCT PROPERTIES

Clonality	Polyclonal
Clone ID	
Concentration	1 mg/mL
Conjugation	Unconjugated
Purification	The antibody was affinity-purified from rabbit anti-serum by affinity-chromatography.
Dilution	IF 1:200-1:1000
Range	ELISA 1:5000
Formulation	PBS, 50% Glycerol, 0.5% BSA and 0.02% Sodium Azide.
Isotype	IgG
Storage	Store at -20°C for up to 1 year from the date of receipt, and avoid repeat freeze-thaw cycles.
Instruction	

TARGET INFORMATION

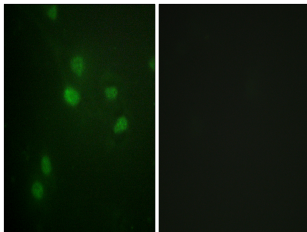
Gene ID [126961/333932/653604](#)
[3020/3021](#)
[H3C15.H3C14.H3C13](#)
[H3-3A.H3-3B](#)
[H32_HUMAN](#)
[H33_HUMAN](#)
[H31_HUMAN](#)

Immunogen The antiserum was produced against synthesized peptide derived from human Histone H3 around the phosphorylation site of Thr11 at amino acid range 1-50

Immunogen Region 1-80

Specificity Phospho-Histone H3-Thr11 polyclonal antibody (Histone H3.1 and Histone H3.2 and Histone H3.3) binds to endogenous Histone H3.1 and Histone H3.2 and Histone H3.3 at the amino acid region 1-80 only when phosphorylated at Thr11.

Immunogen Sequence



Immunofluorescence analysis of HUVEC cells, using Histone H3 (Phospho-Thr11) Antibody. The picture on the right is blocked with the phospho peptide.