

Anti-Phospho-CCNE1-Thr77 antibody (20-100) (STJ91326)

STJ91326

GENERAL INFORMATION

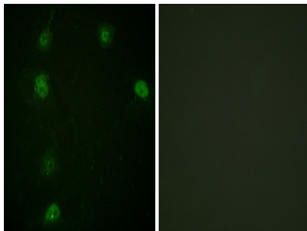
Product Type	Primary antibodies
Short Description	Rabbit polyclonal antibody anti-Phospho-G1/S-Specific Cyclin-E1-Thr77 (20-100) is suitable for use in Immunohistochemistry, Immunofluorescence, Immunocytochemistry and ELISA research applications.
Applications	IHC-P, IF, ICC, ELISA
Host/Source	Rabbit
Reactivity	Human, Rat, Mouse

PRODUCT PROPERTIES

Clonality	Polyclonal
Clone ID	
Concentration	1 mg/mL
Conjugation	Unconjugated
Purification	The antibody was affinity-purified from rabbit anti-serum by affinity-chromatography.
Dilution Range	IHC 1:100-1:300 IF 1:200-1:1000 ELISA 1:10000
Formulation	PBS, 50% Glycerol, 0.5% BSA and 0.02% Sodium Azide.
Isotype	IgG
Storage Instruction	Store at -20°C for up to 1 year from the date of receipt, and avoid repeat freeze-thaw cycles.

TARGET INFORMATION

Gene ID	898
Gene Symbol	CCNE1
Uniprot ID	CCNE1_HUMAN
Immunogen	The antiserum was produced against synthesized peptide derived from human Cyclin E1 around the phosphorylation site of Thr77 at amino acid range 43-92
Immunogen Region	20-100
Specificity	Phospho-CCNE1-Thr77 polyclonal antibody (G1/S-Specific Cyclin-E1) binds to endogenous G1/S-Specific Cyclin-E1 at the amino acid region 20-100 only when phosphorylated at Thr77.
Immunogen Sequence	



Immunofluorescence analysis of HeLa cells, using Cyclin E1 (Phospho-Thr77) Antibody. The picture on the right is blocked with the phospho peptide.