

Anti-Phospho-PLN-Ser16/T17 antibody (1-80) (STJ91324)

STJ91324

GENERAL INFORMATION

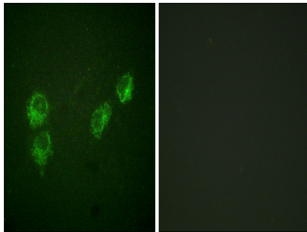
| | |
|--------------------------|--|
| Product Type | Primary antibodies |
| Short Description | Rabbit polyclonal antibody anti-Phospho-Cardiac Phospholamban-Ser16/T17 (1-80) is suitable for use in Immunofluorescence, Immunocytochemistry and ELISA research applications. |
| Applications | IF, ICC, ELISA |
| Host/Source | Rabbit |
| Reactivity | Human, Mouse, Rat |

PRODUCT PROPERTIES

| | |
|-----------------------|--|
| Clonality | Polyclonal |
| Clone ID | |
| Concentration | 1 mg/mL |
| Conjugation | Unconjugated |
| Purification | The antibody was affinity-purified from rabbit anti-serum by affinity-chromatography. |
| Dilution Range | IF 1:200-1:1000 ELISA 1:10000 |
| Formulation | PBS, 50% Glycerol, 0.5% BSA and 0.02% Sodium Azide. |
| Isotype | IgG |
| Storage | Store at -20°C for up to 1 year from the date of receipt, and avoid repeat freeze-thaw cycles. |
| Instruction | |

TARGET INFORMATION

| | |
|---------------------------|--|
| Gene ID | 5350 |
| Gene Symbol | PLN |
| Uniprot ID | PPLA_HUMAN |
| Immunogen | The antiserum was produced against synthesized peptide derived from human PLN around the phosphorylation site of Ser16 and Thr17 at amino acid range 1-50 |
| Immunogen Region | 1-80 |
| Specificity | Phospho-PLN-Ser16/T17 polyclonal antibody (Cardiac Phospholamban) binds to endogenous Cardiac Phospholamban at the amino acid region 1-80 only when phosphorylated at Ser16/T17. |
| Immunogen Sequence | |



Immunofluorescence analysis of HUVEC cells, using PLN (Phospho-Ser16+Thr17) Antibody. The picture on the right is blocked with the phospho peptide.