

## Anti-Phospho-PIKFYVE-Ser307 antibody (250-330) (STJ91322)

STJ91322

### GENERAL INFORMATION

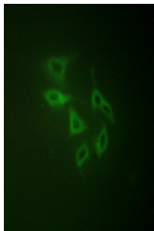
<b>Product Type</b>	Primary antibodies
<b>Short Description</b>	Rabbit polyclonal antibody anti-Phospho-1-Phosphatidylinositol 3-Phosphate 5-Kinase-Ser307 (250-330) is suitable for use in Immunohistochemistry, Immunofluorescence, Immunocytochemistry and ELISA research applications.
<b>Applications</b>	IHC-P, IF, ICC, ELISA
<b>Host/Source</b>	Rabbit
<b>Reactivity</b>	Human, Mouse, Rat

### PRODUCT PROPERTIES

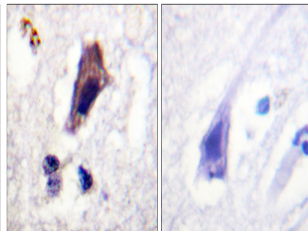
<b>Clonality</b>	Polyclonal
<b>Clone ID</b>	
<b>Concentration</b>	1 mg/mL
<b>Conjugation</b>	Unconjugated
<b>Purification</b>	The antibody was affinity-purified from rabbit anti-serum by affinity-chromatography.
<b>Dilution Range</b>	IHC 1:100-1:300 IF 1:200-1:1000 ELISA 1:10000
<b>Formulation</b>	PBS, 50% Glycerol, 0.5% BSA and 0.02% Sodium Azide.
<b>Isotype</b>	IgG
<b>Storage Instruction</b>	Store at -20°C for up to 1 year from the date of receipt, and avoid repeat freeze-thaw cycles.

### TARGET INFORMATION

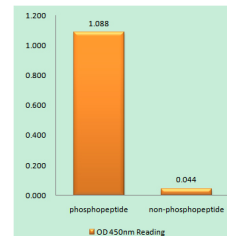
<b>Gene ID</b>	200576
<b>Gene Symbol</b>	PIKFYVE
<b>Uniprot ID</b>	FYV1_HUMAN
<b>Immunogen</b>	The antiserum was produced against synthesized peptide derived from human PIP5K around the phosphorylation site of Ser307 at amino acid range 273-322
<b>Immunogen Region</b>	250-330
<b>Specificity</b>	Phospho-PIKFYVE-Ser307 polyclonal antibody (1-Phosphatidylinositol 3-Phosphate 5-Kinase) binds to endogenous 1-Phosphatidylinositol 3-Phosphate 5-Kinase at the amino acid region 250-330 only when phosphorylated at Ser307.
<b>Immunogen Sequence</b>	



Immunofluorescence analysis of HeLa cells, using PIP5K (Phospho-Ser307) Antibody. The picture on the right is blocked with the phospho peptide.



Immunohistochemistry analysis of paraffin-embedded human brain, using PIP5K (Phospho-Ser307) Antibody. The picture on the right is blocked with the phospho peptide.



Enzyme-Linked Immunosorbent Assay (Phospho-ELISA) for Immunogen Phosphopeptide (Phospho-left) and Non-Phosphopeptide (Phospho-right), using PIP5K (Phospho-Ser307) Antibody

This product is suitable for in-vitro studies under the RESEARCH USE ONLY [RUO] licence. This product must not be used as for diagnostic or other medical purposes.  
St John's Laboratory Ltd, Knowledge Dock Business Centre, University Way, London, E16 2RD | Tel: 0208 223 3081