

Anti-Phospho-NMDA Epsilon 1/2-Tyr1246/1252 antibody (1190-1270) (STJ91307)

STJ91307

GENERAL INFORMATION

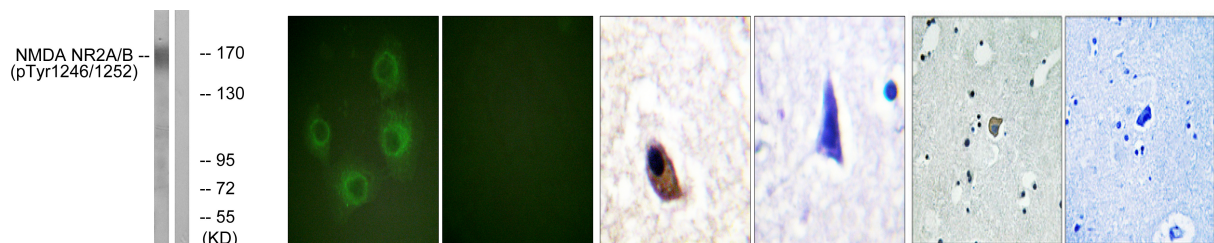
Product Type	Primary antibodies
Short Description	Rabbit polyclonal antibody anti-Phospho-Glutamate receptor ionotropic, NMDA 2A and Glutamate receptor ionotropic, NMDA 2B-Tyr1246/1252 (1190-1270) is suitable for use in Western Blot, Immunohistochemistry, Immunofluorescence, Immunocytochemistry and
Applications	WB, IHC-P, IF, ICC, ELISA
Host/Source	Rabbit
Reactivity	Human, Mouse, Rat

PRODUCT PROPERTIES

Clonality	Polyclonal
Clone ID	
Concentration	1 mg/mL
Conjugation	Unconjugated
Purification	The antibody was affinity-purified from rabbit anti-serum by affinity-chromatography.
Dilution Range	IHC 1:100-1:300 IF 1:200-1:1000 ELISA 1:10000
Formulation	PBS, 50% Glycerol, 0.5% BSA and 0.02% Sodium Azide.
Isotype	IgG
Storage Instruction	Store at -20°C for up to 1 year from the date of receipt, and avoid repeat freeze-thaw cycles.

TARGET INFORMATION

Gene ID	2903 2904
Gene Symbol	GRIN2A GRIN2B
Uniprot ID	NMDE1_HUMAN NMDE2_HUMAN
Immunogen	The antiserum was produced against synthesized peptide derived from human NMDAR2A/B around the phosphorylation site of Tyr1246/1252 at amino acid range 1216-1265
Immunogen Region	1190-1270
Specificity	Phospho-NMDA Epsilon 1/2-Tyr1246/1252 polyclonal antibody (Glutamate receptor ionotropic, NMDA 2A and Glutamate receptor ionotropic, NMDA 2B) binds to endogenous Glutamate receptor ionotropic, NMDA 2A and Glutamate receptor ionotropic, NMDA 2B at the
Immunogen Sequence	



Western blot analysis of NMDAR2A/B (Phospho-Tyr1246/1252) Antibody. The lane on the right is blocked with the NMDAR2A/B (Phospho-Tyr1246/1252) peptide.

Immunofluorescence analysis of HUVEC cells, using NMDAR2A/B (Phospho-Tyr1246/1252) Antibody. The picture on the right is blocked with the phospho peptide.

Immunohistochemistry analysis of paraffin-embedded human brain, using NMDAR2A/B (Phospho-Tyr1246/1252) Antibody. The picture on the right is blocked with the phospho peptide.

Immunohistochemical analysis of paraffin-embedded Human brain. Antibody was diluted at 1:100 (4°C overnight). High-pressure and temperature Tris-EDTA, pH8.0 was used for antigen retrieval. Negative control (right) obtained from antibody was pre-absorbed by immunogen peptide.

This product is suitable for in-vitro studies under the RESEARCH USE ONLY [RUO] licence. This product must not be used as for diagnostic or other medical purposes.
St John's Laboratory Ltd, Knowledge Dock Business Centre, University Way, London, E16 2RD | Tel: 0208 223 3081