

Anti-Phospho-DDX5-Tyr593 antibody (540-620) (STJ91304)

STJ91304

GENERAL INFORMATION

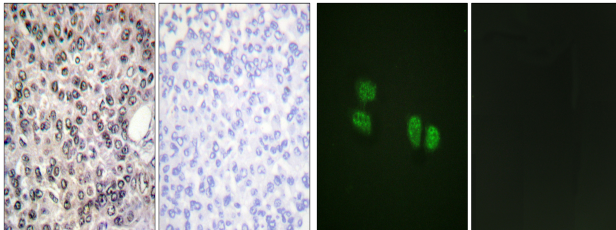
Product Type	Primary antibodies
Short Description	Rabbit polyclonal antibody anti-Phospho-Probable Atp-Dependent Rna Helicase Ddx5-Tyr593 (540-620) is suitable for use in Western Blot, Immunohistochemistry, Immunofluorescence, Immunocytochemistry and ELISA research applications.
Applications	WB, IHC-P, IF, ICC, ELISA
Host/Source	Rabbit
Reactivity	Human, Mouse, Rat

PRODUCT PROPERTIES

Clonality	Polyclonal
Clone ID	
Concentration	1 mg/mL
Conjugation	Unconjugated
Purification	The antibody was affinity-purified from rabbit anti-serum by affinity-chromatography.
Dilution Range	WB 1:500-1:2000 IHC 1:100-1:300 IF 1:200-1:1000 ELISA 1:10000
Formulation	PBS, 50% Glycerol, 0.5% BSA and 0.02% Sodium Azide.
Isotype	IgG
Storage Instruction	Store at -20°C for up to 1 year from the date of receipt, and avoid repeat freeze-thaw cycles.

TARGET INFORMATION

Gene ID	1655
Gene Symbol	DDX5
Uniprot ID	DDX5_HUMAN
Immunogen	The antiserum was produced against synthesized peptide derived from human DDX5/DEAD-box Protein 5 around the phosphorylation site of Tyr593 at amino acid range 565-614
Immunogen Region	540-620
Specificity	Phospho-DDX5-Tyr593 polyclonal antibody (Probable Atp-Dependent Rna Helicase Ddx5) binds to endogenous Probable Atp-Dependent Rna Helicase Ddx5 at the amino acid region 540-620 only when phosphorylated at Tyr593.
Immunogen Sequence	



Immunohistochemistry analysis of paraffin-embedded human breast carcinoma, using DDX5/DEAD-box Protein 5 (Phospho-Tyr593) Antibody. The picture on the right is blocked with the phospho peptide.

Immunofluorescence analysis of HeLa cells, using DDX5/DEAD-box Protein 5 (Phospho-Tyr593) Antibody. The picture on the right is blocked with the phospho peptide.

This product is suitable for in-vitro studies under the RESEARCH USE ONLY [RUO] licence. This product must not be used as for diagnostic or other medical purposes.
St John's Laboratory Ltd, Knowledge Dock Business Centre, University Way, London, E16 2RD | Tel: 0208 223 3081