

Anti-Phospho-DDX3X-Thr322 antibody (440-520) (STJ91303)

STJ91303

GENERAL INFORMATION

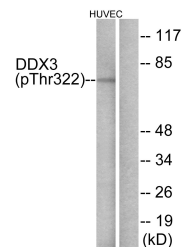
Product Type	Primary antibodies
Short Description	Rabbit polyclonal antibody anti-Phospho-Atp-Dependent Rna Helicase Ddx3x-Thr322 (440-520) is suitable for use in Immunohistochemistry, Immunofluorescence, Immunocytochemistry and ELISA research applications.
Applications	IHC-P, IF, ICC, ELISA
Host/Source	Rabbit
Reactivity	Human, Mouse, Rat

PRODUCT PROPERTIES

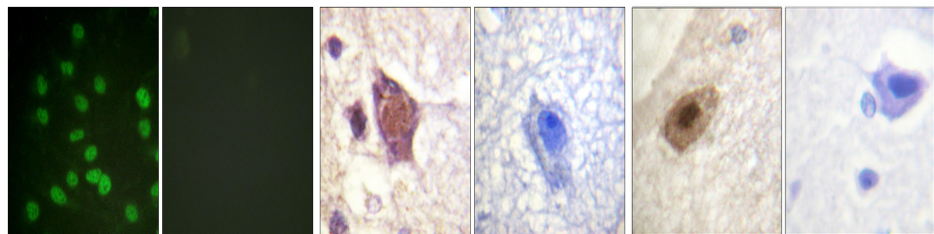
Clonality	Polyclonal
Clone ID	
Concentration	1 mg/mL
Conjugation	Unconjugated
Purification	The antibody was affinity-purified from rabbit anti-serum by affinity-chromatography.
Dilution Range	IHC 1:100-1:300 IF 1:200-1:1000 ELISA 1:10000
Formulation	PBS, 50% Glycerol, 0.5% BSA and 0.02% Sodium Azide.
Isotype	IgG
Storage Instruction	Store at -20°C for up to 1 year from the date of receipt, and avoid repeat freeze-thaw cycles.

TARGET INFORMATION

Gene ID	1654
Gene Symbol	DDX3X
Uniprot ID	DDX3X_HUMAN
Immunogen	The antiserum was produced against synthesized peptide derived from human DDX3/DEAD-box Protein 3 around the phosphorylation site of Thr322 at amino acid range 466-515
Immunogen Region	440-520
Specificity	Phospho-DDX3X-Thr322 polyclonal antibody (Atp-Dependent Rna Helicase Ddx3x) binds to endogenous Atp-Dependent Rna Helicase Ddx3x at the amino acid region 440-520 only when phosphorylated at Thr322.
Immunogen Sequence	



Western blot analysis of DDX3/DEAD-box Protein 3 (Phospho-Thr322) Antibody. The lane on the right is blocked with the DDX3/DEAD-box Protein 3 (Phospho-Thr322) peptide.



Immunofluorescence analysis of HUVEC cells treated with serum 20% 30', using DDX3/DEAD-box Protein 3 (Phospho-Thr322) Antibody. The picture on the right is blocked with the phospho peptide.

Immunohistochemistry analysis of paraffin-embedded human brain, using DDX3/DEAD-box Protein 3 (Phospho-Thr322) Antibody. The picture on the right is blocked with the phospho peptide.

Immunohistochemical analysis of paraffin-embedded Human brain. Antibody was diluted at 1:100 (4°C overnight). High-pressure and temperature Tris-EDTA, pH8.0 was used for antigen retrieval. Negative control (right) obtained from antibody was pre-absorbed by immunogen peptide.

This product is suitable for in-vitro studies under the RESEARCH USE ONLY [RUO] licence. This product must not be used as for diagnostic or other medical purposes.
St John's Laboratory Ltd, Knowledge Dock Business Centre, University Way, London, E16 2RD | Tel: 0208 223 3081