

## Anti-Phospho-DAPK1-Ser308 antibody (250-330) (STJ91301)

STJ91301

### GENERAL INFORMATION

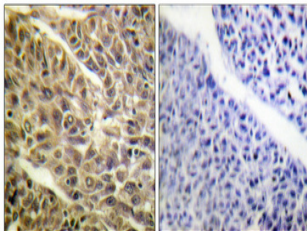
<b>Product Type</b>	Primary antibodies
<b>Short Description</b>	Rabbit polyclonal antibody anti-Phospho-Death-Associated Protein Kinase 1-Ser308 (250-330) is suitable for use in Immunohistochemistry, Immunofluorescence, Immunocytochemistry and ELISA research applications.
<b>Applications</b>	IHC-P, IF, ICC, ELISA
<b>Host/Source</b>	Rabbit
<b>Reactivity</b>	Human, Mouse

### PRODUCT PROPERTIES

<b>Clonality</b>	Polyclonal
<b>Clone ID</b>	
<b>Concentration</b>	1 mg/mL
<b>Conjugation</b>	Unconjugated
<b>Purification</b>	The antibody was affinity-purified from rabbit anti-serum by affinity-chromatography.
<b>Dilution Range</b>	IHC 1:100-1:300 IF 1:200-1:1000 ELISA 1:10000
<b>Formulation</b>	PBS, 50% Glycerol, 0.5% BSA and 0.02% Sodium Azide.
<b>Isotype</b>	IgG
<b>Storage Instruction</b>	Store at -20°C for up to 1 year from the date of receipt, and avoid repeat freeze-thaw cycles.

### TARGET INFORMATION

<b>Gene ID</b>	1612
<b>Gene Symbol</b>	DAPK1
<b>Uniprot ID</b>	DAPK1_HUMAN
<b>Immunogen</b>	The antiserum was produced against synthesized peptide derived from human DAPK1 around the phosphorylation site of Ser308 at amino acid range 274-323
<b>Immunogen Region</b>	250-330
<b>Specificity</b>	Phospho-DAPK1-Ser308 polyclonal antibody (Death-Associated Protein Kinase 1) binds to endogenous Death-Associated Protein Kinase 1 at the amino acid region 250-330 only when phosphorylated at Ser308.
<b>Immunogen Sequence</b>	



Immunohistochemical analysis of paraffin-embedded Human lung cancer. Antibody was diluted at 1:100 (4°C overnight). High-pressure and temperature Tris-EDTA, pH8.0 was used for antigen retrieval. Negative control (right) obtained from antibody was pre-absorbed by immunogen peptide.