

## Anti-Phospho-PLD1-Ser561 antibody (500-580) (STJ91296)

STJ91296

### GENERAL INFORMATION

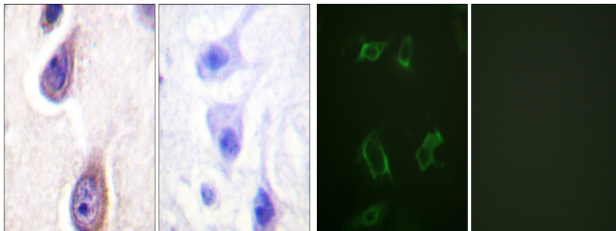
<b>Product Type</b>	Primary antibodies
<b>Short Description</b>	Rabbit polyclonal antibody anti-Phospho-Phospholipase D1-Ser561 (500-580) is suitable for use in Immunohistochemistry, Immunofluorescence, Immunocytochemistry and ELISA research applications.
<b>Applications</b>	IHC-P, IF, ICC, ELISA
<b>Host/Source</b>	Rabbit
<b>Reactivity</b>	Human, Mouse, Rat

### PRODUCT PROPERTIES

<b>Clonality</b>	Polyclonal
<b>Clone ID</b>	
<b>Concentration</b>	1 mg/mL
<b>Conjugation</b>	Unconjugated
<b>Purification</b>	The antibody was affinity-purified from rabbit anti-serum by affinity-chromatography.
<b>Dilution Range</b>	IHC 1:100-1:300 IF 1:200-1:1000 ELISA 1:10000
<b>Formulation</b>	PBS, 50% Glycerol, 0.5% BSA and 0.02% Sodium Azide.
<b>Isotype</b>	IgG
<b>Storage Instruction</b>	Store at -20°C for up to 1 year from the date of receipt, and avoid repeat freeze-thaw cycles.

### TARGET INFORMATION

<b>Gene ID</b>	5337
<b>Gene Symbol</b>	PLD1
<b>Uniprot ID</b>	PLD1_HUMAN
<b>Immunogen</b>	The antiserum was produced against synthesized peptide derived from human PLD1 around the phosphorylation site of Ser561 at amino acid range 527-576
<b>Immunogen Region</b>	500-580
<b>Specificity</b>	Phospho-PLD1-Ser561 polyclonal antibody (Phospholipase D1) binds to endogenous Phospholipase D1 at the amino acid region 500-580 only when phosphorylated at Ser561.
<b>Immunogen Sequence</b>	



Immunohistochemistry analysis of paraffin-embedded human brain, using PLD1 (Phospho-Ser561) Antibody. The picture on the right is blocked with the phospho peptide.

Immunofluorescence analysis of HepG2 cells, using PLD1 (Phospho-Ser561) Antibody. The picture on the right is blocked with the phospho peptide.

This product is suitable for in-vitro studies under the RESEARCH USE ONLY [RUO] licence. This product must not be used as for diagnostic or other medical purposes.  
St John's Laboratory Ltd, Knowledge Dock Business Centre, University Way, London, E16 2RD | Tel: 0208 223 3081