

Anti-Phospho-MTOR-Ser2481 antibody (2420-2500) (STJ91294)

STJ91294

GENERAL INFORMATION

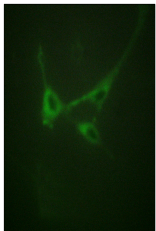
| | |
|--------------------------|--|
| Product Type | Primary antibodies |
| Short Description | Rabbit polyclonal antibody anti-Phospho-Serine/Threonine-Protein Kinase Mtor-Ser2481 (2420-2500) is suitable for use in Immunohistochemistry, Immunofluorescence, Immunocytochemistry and ELISA research applications. |
| Applications | IHC-P, IF, ICC, ELISA |
| Host/Source | Rabbit |
| Reactivity | Human, Mouse, Rat |

PRODUCT PROPERTIES

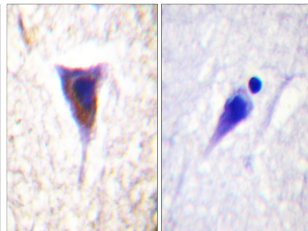
| | |
|----------------------------|---|
| Clonality | Polyclonal |
| Clone ID | |
| Concentration | 1 mg/mL |
| Conjugation | Unconjugated |
| Purification | The antibody was affinity-purified from rabbit anti-serum by affinity-chromatography. |
| Dilution Range | IHC 1:100-1:300 IF 1:200-1:1000 ELISA 1:20000 |
| Formulation | PBS, 50% Glycerol, 0.5% BSA and 0.02% Sodium Azide. |
| Isotype | IgG |
| Storage Instruction | Store at 20°C for up to 1 year from the date of receipt, and avoid repeat freeze-thaw cycles. |

TARGET INFORMATION

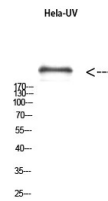
| | |
|---------------------------|--|
| Gene ID | 2475 |
| Gene Symbol | MTOR |
| Uniprot ID | MTOR_HUMAN |
| Immunogen | The antiserum was produced against synthesized peptide derived from human mTOR around the phosphorylation site of Ser2481 at amino acid range 2447-2496 |
| Immunogen Region | 2420-2500 |
| Specificity | Phospho-MTOR-Ser2481 polyclonal antibody (Serine/Threonine-Protein Kinase Mtor) binds to endogenous Serine/Threonine-Protein Kinase Mtor at the amino acid region 2420-2500 only when phosphorylated at Ser2481. |
| Immunogen Sequence | |



Immunofluorescence analysis of NIH/3T3 cells, using mTOR (Phospho-Ser2481) Antibody. The picture on the right is blocked with the phospho peptide.



Immunohistochemistry analysis of paraffin-embedded human brain, using mTOR (Phospho-Ser2481) Antibody. The picture on the right is blocked with the phospho peptide.



Western blot analysis of HeLa-UV using Antibody diluted at 1:1000. Secondary antibody was diluted at 1:20000

This product is suitable for in-vitro studies under the RESEARCH USE ONLY [RUO] licence. This product must not be used as for diagnostic or other medical purposes.
St John's Laboratory Ltd, Knowledge Dock Business Centre, University Way, London, E16 2RD | Tel: 0208 223 3081