

## Anti-Phospho-TBC1D4-Thr642 antibody (580-660) (STJ91288)

STJ91288

### GENERAL INFORMATION

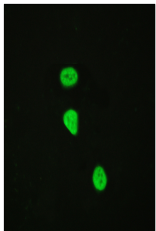
<b>Product Type</b>	Primary antibodies
<b>Short Description</b>	Rabbit polyclonal antibody anti-Phospho-Tbc1 Domain Family Member 4-Thr642 (580-660) is suitable for use in Western Blot, Immunohistochemistry, Immunofluorescence, Immunocytochemistry and ELISA research applications.
<b>Applications</b>	WB, IHC-P, IF, ICC, ELISA
<b>Host/Source</b>	Rabbit
<b>Reactivity</b>	Human, Mouse

### PRODUCT PROPERTIES

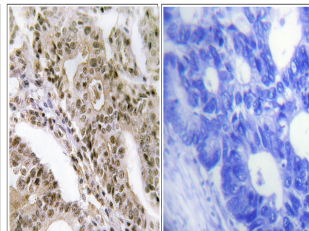
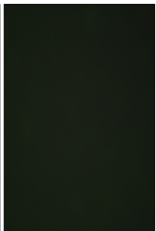
<b>Clonality</b>	Polyclonal
<b>Clone ID</b>	
<b>Concentration</b>	1 mg/mL
<b>Conjugation</b>	Unconjugated
<b>Purification</b>	The antibody was affinity-purified from rabbit anti-serum by affinity-chromatography.
<b>Dilution Range</b>	IHC 1:100-1:300 IF 1:200-1:1000 ELISA 1:5000
<b>Formulation</b>	PBS, 50% Glycerol, 0.5% BSA and 0.02% Sodium Azide.
<b>Isotype</b>	IgG
<b>Storage Instruction</b>	Store at 20°C for up to 1 year from the date of receipt, and avoid repeat freeze-thaw cycles.

### TARGET INFORMATION

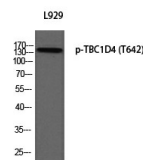
<b>Gene ID</b>	9882
<b>Gene Symbol</b>	TBC1D4
<b>Uniprot ID</b>	TBCD4_HUMAN
<b>Immunogen</b>	The antiserum was produced against synthesized peptide derived from human AS160 around the phosphorylation site of Thr642 at amino acid range 611-660
<b>Immunogen Region</b>	580-660
<b>Specificity</b>	Phospho-TBC1D4-Thr642 polyclonal antibody (Tbc1 Domain Family Member 4) binds to endogenous Tbc1 Domain Family Member 4 at the amino acid region 580-660 only when phosphorylated at Thr642.
<b>Immunogen Sequence</b>	



Immunofluorescence analysis of HeLa cells, using AS160 (Phospho-Thr642) Antibody. The picture on the right is blocked with the phospho peptide.



Immunohistochemistry analysis of paraffin-embedded human lung carcinoma, using AS160 (Phospho-Thr642) Antibody. The picture on the right is blocked with the phospho peptide.



Western blot analysis of L929 using p-TBC1D4 (T642) antibody. Antibody was diluted at 1:2000

This product is suitable for in-vitro studies under the RESEARCH USE ONLY [RUO] licence. This product must not be used as for diagnostic or other medical purposes.  
St John's Laboratory Ltd, Knowledge Dock Business Centre, University Way, London, E16 2RD | Tel: 0208 223 3081