

Anti-Phospho-GRIA1-Ser849 antibody (790-870) (STJ91286)

STJ91286

GENERAL INFORMATION

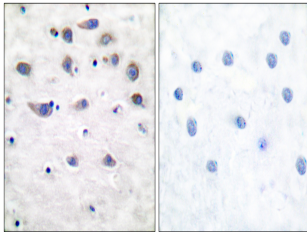
Product Type	Primary antibodies
Short Description	Rabbit polyclonal antibody anti-Phospho-Glutamate Receptor 1-Ser849 (790-870) is suitable for use in Immunohistochemistry, Immunofluorescence and ELISA research applications.
Applications	IHC-P, IF-P, ELISA
Host/Source	Rabbit
Reactivity	Human, Mouse, Rat

PRODUCT PROPERTIES

Clonality	Polyclonal
Clone ID	
Concentration	1 mg/mL
Conjugation	Unconjugated
Purification	The antibody was affinity-purified from rabbit anti-serum by affinity-chromatography.
Dilution Range	IHC 1:100-1:300 ELISA 1:40000
Formulation	PBS, 50% Glycerol, 0.5% BSA and 0.02% Sodium Azide.
Isotype	IgG
Storage	Store at -20°C for up to 1 year from the date of receipt, and avoid repeat freeze-thaw cycles.
Instruction	

TARGET INFORMATION

Gene ID	2890
Gene Symbol	GRIA1
Uniprot ID	GRIA1_HUMAN
Immunogen	The antiserum was produced against synthesized peptide derived from human GluR1 around the phosphorylation site of Ser849 at amino acid range 816-865
Immunogen Region	790-870
Specificity	Phospho-GRIA1-Ser849 polyclonal antibody (Glutamate Receptor 1) binds to endogenous Glutamate Receptor 1 at the amino acid region 790-870 only when phosphorylated at Ser849.
Immunogen Sequence	



Immunohistochemistry analysis of paraffin-embedded human brain, using GluR1 (Phospho-Ser849) Antibody. The picture on the right is blocked with the phospho peptide.