

Anti-Phospho-MAPT-Thr212 antibody (470-550) (STJ91285)

STJ91285

GENERAL INFORMATION

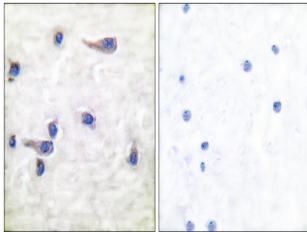
Product Type	Primary antibodies
Short Description	Rabbit polyclonal antibody anti-Phospho-Microtubule-Associated Protein Tau-Thr212 (470-550) is suitable for use in Immunohistochemistry, Immunofluorescence and ELISA research applications.
Applications	IHC-P, IF-P, ELISA
Host/Source	Rabbit
Reactivity	Human, Mouse, Rat

PRODUCT PROPERTIES

Clonality	Polyclonal
Clone ID	
Concentration	1 mg/mL
Conjugation	Unconjugated
Purification	The antibody was affinity-purified from rabbit anti-serum by affinity-chromatography.
Dilution	IHC 1:100-1:300
Range	ELISA 1:20000
Formulation	PBS, 50% Glycerol, 0.5% BSA and 0.02% Sodium Azide.
Isotype	IgG
Storage	Store at -20°C for up to 1 year from the date of receipt, and avoid repeat freeze-thaw cycles.
Instruction	

TARGET INFORMATION

Gene ID	4137
Gene Symbol	MAPT
Uniprot ID	TAU_HUMAN
Immunogen	The antiserum was produced against synthesized peptide derived from human Tau around the phosphorylation site of Thr212 at amino acid range 496-545
Immunogen Region	470-550
Specificity	Phospho-MAPT-Thr212 polyclonal antibody (Microtubule-Associated Protein Tau) binds to endogenous Microtubule-Associated Protein Tau at the amino acid region 470-550 only when phosphorylated at Thr212.
Immunogen Sequence	



Immunohistochemistry analysis of paraffin-embedded human brain, using Tau (Phospho-Thr212) Antibody. The picture on the right is blocked with the phospho peptide.