

Anti-Phospho-PTK2B-Tyr402 antibody (340-420) (STJ91282)

STJ91282

GENERAL INFORMATION

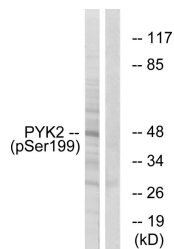
Product Type	Primary antibodies
Short Description	Rabbit polyclonal antibody anti-Phospho-Protein-Tyrosine Kinase 2-Beta-Tyr402 (340-420) is suitable for use in Immunohistochemistry, Immunofluorescence and ELISA research applications.
Applications	IHC-P, IF-P, ELISA
Host/Source	Rabbit
Reactivity	Human, Mouse, Rat

PRODUCT PROPERTIES

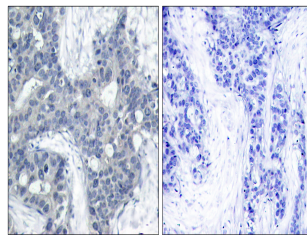
Clonality	Polyclonal
Clone ID	
Concentration	1 mg/mL
Conjugation	Unconjugated
Purification	The antibody was affinity-purified from rabbit anti-serum by affinity-chromatography.
Dilution	IHC 1:100-1:300
Range	ELISA 1:20000
Formulation	PBS, 50% Glycerol, 0.5% BSA and 0.02% Sodium Azide.
Isotype	IgG
Storage Instruction	Store at -20°C for up to 1 year from the date of receipt, and avoid repeat freeze-thaw cycles.

TARGET INFORMATION

Gene ID	2185
Gene Symbol	PTK2B
Uniprot ID	FAK2_HUMAN
Immunogen	The antiserum was produced against synthesized peptide derived from human PYK2 around the phosphorylation site of Tyr402 at amino acid range 369-418
Immunogen Region	340-420
Specificity	Phospho-PTK2B-Tyr402 polyclonal antibody (Protein-Tyrosine Kinase 2-Beta) binds to endogenous Protein-Tyrosine Kinase 2-Beta at the amino acid region 340-420 only when phosphorylated at Tyr402.
Immunogen Sequence	



Western blot analysis of PYK2 (Phospho-Tyr402) Antibody. The lane on the right is blocked with the PYK2 (Phospho-Tyr402) peptide.



Immunohistochemistry analysis of paraffin-embedded human breast carcinoma, using PYK2 (Phospho-Tyr402) Antibody. The picture on the right is blocked with the phospho-peptide.