

Anti-Phospho-TIRAP-Tyr86 antibody (30-110) (STJ91272)

STJ91272

GENERAL INFORMATION

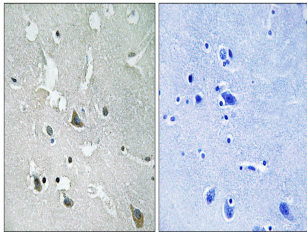
Product Type	Primary antibodies
Short Description	Rabbit polyclonal antibody anti-Phospho-Toll/Interleukin-1 Receptor Domain-Containing Adapter Protein-Tyr86 (30-110) is suitable for use in Western Blot, Immunohistochemistry, Immunofluorescence and ELISA research applications.
Applications	WB, IHC-P, IF-P, ELISA
Host/Source	Rabbit
Reactivity	Human, Mouse

PRODUCT PROPERTIES

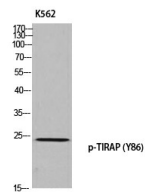
Clonality	Polyclonal
Clone ID	
Concentration	1 mg/mL
Conjugation	Unconjugated
Purification	The antibody was affinity-purified from rabbit anti-serum by affinity-chromatography.
Dilution	IHC 1:100-1:300
Range	ELISA 1:5000
Formulation	PBS, 50% Glycerol, 0.5% BSA and 0.02% Sodium Azide.
Isotype	IgG
Storage	Store at -20°C for up to 1 year from the date of receipt, and avoid repeat freeze-thaw cycles.
Instruction	

TARGET INFORMATION

Gene ID	114609
Gene Symbol	TIRAP
Uniprot ID	TIRAP_HUMAN
Immunogen	The antiserum was produced against synthesized peptide derived from human TIRAP around the phosphorylation site of Tyr86 at amino acid range 52-101
Immunogen Region	30-110
Specificity	Phospho-TIRAP-Tyr86 polyclonal antibody (Toll/Interleukin-1 Receptor Domain-Containing Adapter Protein) binds to endogenous Toll/Interleukin-1 Receptor Domain-Containing Adapter Protein at the amino acid region 30-110 only when phosphorylated at Tyr8
Immunogen Sequence	



Immunohistochemistry analysis of paraffin-embedded human brain, using TIRAP (Phospho-Tyr86) Antibody. The picture on the right is blocked with the phospho peptide.



Western blot analysis of K562 using p-TIRAP (Y86) antibody.

This product is suitable for in-vitro studies under the RESEARCH USE ONLY [RUO] licence. This product must not be used as for diagnostic or other medical purposes.
 St John's Laboratory Ltd, Knowledge Dock Business Centre, University Way, London, E16 2RD | Tel: 0208 223 3081