

Anti-Phospho-KAT5-Ser90 antibody (30-110) (STJ91271)

STJ91271

GENERAL INFORMATION

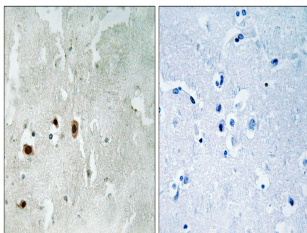
Product Type	Primary antibodies
Short Description	Rabbit polyclonal antibody anti-Phospho-Histone Acetyltransferase Kat5-Ser90 (30-110) is suitable for use in Immunohistochemistry, Immunofluorescence and ELISA research applications.
Applications	IHC-P, IF-P, ELISA
Host/Source	Rabbit
Reactivity	Human, Mouse, Rat

PRODUCT PROPERTIES

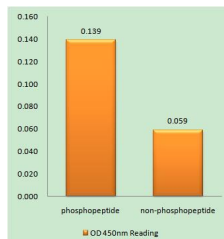
Clonality	Polyclonal
Clone ID	
Concentration	1 mg/mL
Conjugation	Unconjugated
Purification	The antibody was affinity-purified from rabbit anti-serum by affinity-chromatography.
Dilution Range	IHC 1:100-1:300 ELISA 1:5000
Formulation	PBS, 50% Glycerol, 0.5% BSA and 0.02% Sodium Azide.
Isotype	IgG
Storage Instruction	Store at -20°C for up to 1 year from the date of receipt, and avoid repeat freeze-thaw cycles.

TARGET INFORMATION

Gene ID	10524
Gene Symbol	KAT5
Uniprot ID	KAT5_HUMAN
Immunogen	The antiserum was produced against synthesized peptide derived from human Tip60 around the phosphorylation site of Ser90 at amino acid range 56-105
Immunogen Region	30-110
Specificity	Phospho-KAT5-Ser90 polyclonal antibody (Histone Acetyltransferase Kat5) binds to endogenous Histone Acetyltransferase Kat5 at the amino acid region 30-110 only when phosphorylated at Ser90.
Immunogen Sequence	



Immunohistochemistry analysis of paraffin-embedded human brain, using Tip60 (Phospho-Ser90) Antibody. The picture on the right is blocked with the phospho peptide.



Enzyme-Linked Immunosorbent Assay (Phospho-ELISA) for Immunogen Phosphopeptide (Phospho-left) and Non-Phosphopeptide (Phospho-right), using Tip60 (Phospho-Ser90) Antibody

This product is suitable for in-vitro studies under the RESEARCH USE ONLY [RUO] licence. This product must not be used as for diagnostic or other medical purposes.
St John's Laboratory Ltd, Knowledge Dock Business Centre, University Way, London, E16 2RD | Tel: 0208 223 3081