

Anti-Phospho-SPHK2-Thr614 antibody (550-630) (STJ91268)

STJ91268

GENERAL INFORMATION

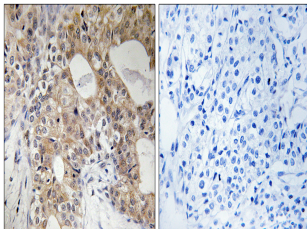
Product Type	Primary antibodies
Short Description	Rabbit polyclonal antibody anti-Phospho-Sphingosine Kinase 2-Thr614 (550-630) is suitable for use in Immunohistochemistry, Immunofluorescence, Western Blot and ELISA research applications.
Applications	IHC-P, IF-P, WB, ELISA
Host/Source	Rabbit
Reactivity	Human, Mouse, Rat

PRODUCT PROPERTIES

Clonality	Polyclonal
Clone ID	
Concentration	1 mg/mL
Conjugation	Unconjugated
Purification	The antibody was affinity-purified from rabbit anti-serum by affinity-chromatography.
Dilution Range	WB 1:500-2000 IHC 1:100-1:300 ELISA 1:5000
Formulation	PBS, 50% Glycerol, 0.5% BSA and 0.02% Sodium Azide.
Isotype	IgG
Storage Instruction	Store at -20°C for up to 1 year from the date of receipt, and avoid repeat freeze-thaw cycles.

TARGET INFORMATION

Gene ID	56848
Gene Symbol	SPHK2
Uniprot ID	SPHK2_HUMAN
Immunogen	The antiserum was produced against synthesized peptide derived from human SPHK2 around the phosphorylation site of Thr614 at amino acid range 580-629
Immunogen Region	550-630
Specificity	Phospho-SPHK2-Thr614 polyclonal antibody (Sphingosine Kinase 2) binds to endogenous Sphingosine Kinase 2 at the amino acid region 550-630 only when phosphorylated at Thr614.
Immunogen Sequence	



Immunohistochemistry analysis of paraffin-embedded human breast carcinoma, using SPHK2 (Phospho-Thr614) Antibody. The picture on the right is blocked with the phospho peptide.

This product is suitable for in-vitro studies under the RESEARCH USE ONLY [RUO] licence. This product must not be used as for diagnostic or other medical purposes.
St John's Laboratory Ltd, Knowledge Dock Business Centre, University Way, London, E16 2RD | Tel: 0208 223 3081