

Anti-Phospho-CNOT2-Ser101 antibody (40-120) (STJ91265)

STJ91265

GENERAL INFORMATION

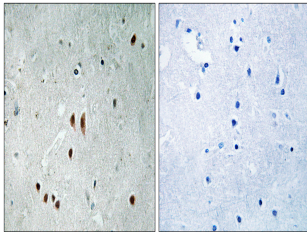
Product Type	Primary antibodies
Short Description	Rabbit polyclonal antibody anti-Phospho-Ccr4-Not Transcription Complex Subunit 2-Ser101 (40-120) is suitable for use in Immunohistochemistry, Immunofluorescence and ELISA research applications.
Applications	IHC-P, IF-P, ELISA
Host/Source	Rabbit
Reactivity	Human, Mouse, Rat

PRODUCT PROPERTIES

Clonality	Polyclonal
Clone ID	
Concentration	1 mg/mL
Conjugation	Unconjugated
Purification	The antibody was affinity-purified from rabbit anti-serum by affinity-chromatography.
Dilution	IHC 1:100-1:300
Range	ELISA 1:10000
Formulation	PBS, 50% Glycerol, 0.5% BSA and 0.02% Sodium Azide.
Isotype	IgG
Storage Instruction	Store at -20°C for up to 1 year from the date of receipt, and avoid repeat freeze-thaw cycles.

TARGET INFORMATION

Gene ID	4848
Gene Symbol	CNOT2
Uniprot ID	CNOT2_HUMAN
Immunogen	The antiserum was produced against synthesized peptide derived from human CNOT2 around the phosphorylation site of Ser101 at amino acid range 67-116
Immunogen Region	40-120
Specificity	Phospho-CNOT2-Ser101 polyclonal antibody (Ccr4-Not Transcription Complex Subunit 2) binds to endogenous Ccr4-Not Transcription Complex Subunit 2 at the amino acid region 40-120 only when phosphorylated at Ser101.
Immunogen Sequence	



Immunohistochemistry analysis of paraffin-embedded human brain, using CNOT2 (Phospho-Ser101) Antibody. The picture on the right is blocked with the phospho peptide.